



*Celebrating over 20 Years*



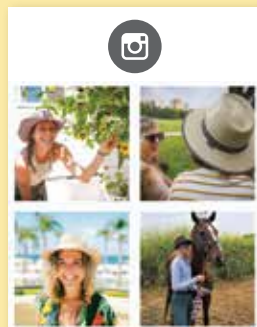
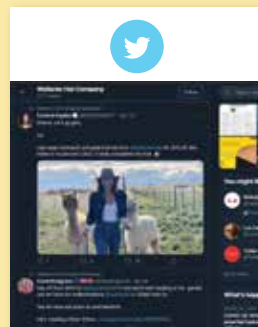
*2021*



Victoria Diva, see page 39;  
Logan, see page 50.



Find Wallaroo in print and online



Here in sunny Colorado, we love spending time outdoors. When I immerse myself in the breathtaking beauty of nature, I automatically reconnect with what matters most: family, friends, community.

In challenging times like the COVID-19 pandemic, I take comfort in knowing that small acts can still accomplish big things for the greater community. Giving back to skin cancer research, adopting sustainable business practices and making our company a great place to work – these are how Wallaroo makes a difference.

This year, Wallaroo is taking time to regroup, switch gears and figure out how to keep our business afloat while remaining true to our values. I am proud of our efforts to balance the long-term sustainability of our business and our employees' well-being.

We also heeded orders to stay closer to home and held our catalog photo shoot near our headquarters in Boulder, rather than venturing out of state. It was a good reminder to appreciate our home in gorgeous Colorado.

But most of all, I know our company wouldn't be where it is today without our amazing Wallaroo family – thank you for choosing us to join you in all of your outdoor adventures.

With gratitude for your support,

Stephanie Carter  
CEO & Co-founder

*It's a sunny life. Wear your hat.®*



Cover: Charlie, see page 7. On Stephanie, above: Monterey, see page 6.

## 2021 Collection

THE "W" COLLECTION.....	4
WOMEN.....	28
PETITES .....	46
MEN.....	50
CHILDREN .....	60
FLOOR STAND .....	62
PACKING/ADJUSTING/WASHING/SIZING.....	62
SALES REPS .....	63
INDEX.....	63

### UPF Ratings:

Look for our sun icons throughout the catalog to determine which hats are UPF rated. Our 30+ fabrics block 96% of the sun's damaging ultraviolet rays, while UPF 50+ blocks an impressive 97.5%. Always remember, a Wallaroo hat only protects the skin it covers. Safeguard the rest of your body by wearing sunscreen and sunglasses.



### The Skin Cancer Foundation

recommends the material of every Wallaroo hat with a UPF rating and a 3" brim or wider as an effective UV protectant.



### Wallaroo Sun Protection Commitment:

We promise that each year we will donate 1% of our profits to skin cancer research, education and prevention in the United States.



### We are a Certified B Corporation:

B Corps must meet rigorous standards of performance, accountability and transparency. The goal is to use the power of business as a force for good to address social and environmental issues, build strong local communities and provide great places to work. Learn more at [bcorporation.net](https://www.bcorporation.net).



For sizing information & packing instructions, visit our website at [www.wallarooohats.com](https://www.wallarooohats.com)



# The W Collection

The W Collection offers sophisticated options crafted with lasting, quality construction to top off any woman's look with style.

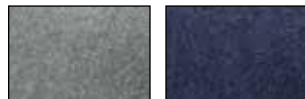


## Cambria

Soft, brushed felt adds a touch of warmth to your all-season hat wardrobe. A round crown and wide brim flatter and protect.

4" brim. Inner drawstring adjusts fit. Packable. 100% wool felt exclusive of trim. Spot clean. M (58cm).

**Style: CAMB** (033) Available January 2021.



grey

navy



new!

## Aspen

Update your look any time of year with this stunning fedora. Made from sturdy yet soft felt in wardrobe-enhancing neutrals.

2¾" brim. Inner drawstring adjusts fit. Packable. 100% wool felt exclusive of trim. Spot clean. M (58cm).

**Style: ASPE** (033) Available January 2021.



camel

black



new!





## Monterey

We love fedoras because they are so versatile. Try these with jeans and watch an everyday look turn into a fashion statement. Blue and white pinstripe.

2<sup>3</sup>/<sub>8</sub>" brim. Inner drawstring adjusts fit. Packing not recommended. 100% Japanese glazed paper exclusive of trim. Do not wash. M (58cm).

**Style: MNTRY** (033)



natural/blue



*new color!*

*"For all those who think they don't look good in hats, try this one on! Very flattering shape and fit."*

DIENNA W.

## Charlie

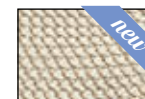
Sophisticated structure and contrast stitching come together in perfect harmony.

2<sup>3</sup>/<sub>4</sub>" brim. Inner drawstring adjusts fit. Packable. 100% polypropylene exclusive of trim. Spot clean. M (58cm).

**Style: CHA** (025) *New color available January 2021.*



ivory/black



ivory/taupe







## Ojai

The fine detail of the tightly crocheted diamond pattern showcases the premium construction and style of this hat.

4" brim. Inner drawstring adjusts fit. Packing not recommended. 100% raffia exclusive of trim. Do not wash. M (58cm).

**Style: OJAI** (032)



almond

dusty blue

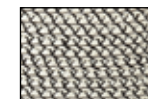


## Darby

The cloche style hat is making a comeback, and we're ready with this charming addition to our collection.

3" brim. Inner drawstring adjusts fit. Packable. 100% polypropylene exclusive of trim. Spot clean. M (58cm).

**Style: DARB** (025)



ivory/black







## Camille

The natural fibers of raffia are comfortable and cool on a hot summer day. The generous brim adds elegance and welcome shade. Contrasting colored raffia sets this apart from the crowd.

4" brim. Inner drawstring adjusts fit. Packing not recommended. 100% raffia. Do not wash. M (58cm).

**Style: CAMI (031)**



natural/  
turquoise

natural/  
mushroom

natural/  
navy



## Amelia

A rounded crown and an upturned brim create the silhouette for one of our most popular styles. Slim faux leather trim adds a distinct touch.

3 3/4" brim. Inner drawstring adjusts fit. Packable. 100% paper braid exclusive of trim. Spot clean. M (58cm).

**Style: AME (027)**



natural

mixed black



*"Protective, gorgeous and comfortable to wear!"* DELLA H.





## Aria

Simple, elegant style with an oversized brim for maximum sun protection. Tailored ribbon trim.

4½" brim. Inner drawstring adjusts fit. Packable. 100% polyester exclusive of trim. Spot clean. M (58cm).

**Style: ARI (025)**



taupe

black



## Riviera

With a light, narrow braid on the crown and a darker, wider weave for the brim, this hat is a simple study in contrasts.

3½" brim. Inner drawstring adjusts fit. Packable. 100% paper braid/poly-ribbon exclusive of trim. Spot clean. M (58cm).

**Style: RIV (027)**



camel/black

natural/tan







## Laguna

The juxtaposition of raw, natural fiber with the clean, structured lines of paper braid shows that opposites really do attract. Faux leather cord accented with gold metal tips bridges the gap.

27/8" brim. Inner drawstring adjusts fit. Packable. 50% raffia, 50% paper braid exclusive of trim. Do not wash. M (58cm).

**Style: LAGU** (031)



natural/white



natural/navy



## Sausalito

Romantic and charming, this hat goes well with any occasion. Lined for extra sun protection.

4" brim. Inner drawstring adjusts fit. Packing not recommended. 100% raffia exclusive of trim, cotton lining. Do not wash. M (58cm).

**Style: SAUS** (031)



natural

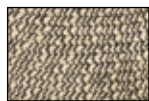






**Josie**

Classic fedora style with a wire-edged brim and a wide black ribbon band.  
3" brim. Inner drawstring adjusts fit. Packable. 100% paper braid exclusive of trim. Spot clean. M (58cm).  
**Style: JOS** (024-5)



mixed black



**Julia**

Contrasting trim complements the Audrey Hepburn-inspired polka dot chiffon scarf.  
4" brim. Inner drawstring adjusts fit. Packable. 100% paper braid exclusive of trim. Spot clean. M (58cm).  
**Style: JUL** (025)



natural/black



black/tan



**Bianca**

Our glammed-up visor can be worn to the best beach and country clubs in town. The metallic-edged suede ribbon adds shine.  
3½" brim. Velcro strap adjusts fit. Packable. 100% paper braid exclusive of trim. Spot clean. One size fits most.  
**Style: BIA** (015-5)



black



natural







Savannah Visor

This Wallaroo combines the elegance of the Savannah with the cooler, lighter benefits of a visor.

4" brim. Velcro® strap adjusts fit. Packable. 100% paper braid. Spot clean. One size fits most.

Style: SAVVIS (018-5)



black/  
camel stripes    camel/  
black stripes    navy/  
camel stripes



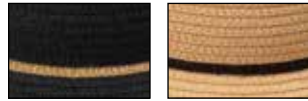
*"It shades my face and is comfortable to wear."* JOANNA O.

Savannah

An expansive brim offers maximum sun protection in dramatic style.

4" brim. Inner drawstring adjusts fit. Packable. 100% paper braid. Spot clean. M (58cm).

Style: SAV (027)



black/  
camel stripes    camel/  
black stripes





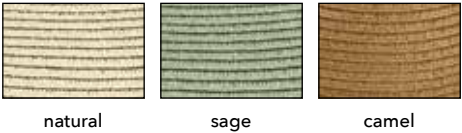


**Montecito**

A broad-brimmed Rancher-style hat with clean lines for a modern, polished look. Faux leather cord with gold metal tips.

4" brim. Inner drawstring adjusts fit. Packable. 100% paper braid exclusive of trim. Spot clean. M (58cm).

**Style: MONTE** (029)

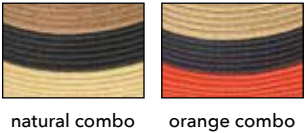


**St.Tropez Trilby**

Vibrant tri-toned hues give this trilby casual style with a kick.

2" brim. Inner drawstring adjusts fit. Packable. 100% paper braid. Spot clean. M (58cm).

**Style: STTR** (025)



*"Can't wait to wear this, spring is almost here!"* LINDA G.





Malibu

An elegant fedora creates a classic look for any occasion. We've dressed up this version with the sparkle of silver and gold-colored beads.

2¾" brim. Inner drawstring adjusts fit. Packing not recommended. 100% raffia exclusive of trim. Do not wash. M (58cm).

Style: MAL (031)



natural mushroom navy



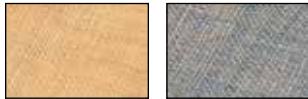
We use high-quality Madagascan raffia, which contains a resin that prevents cracking and brittleness.

Morgan

A wide brim to shade you from the sun and fine raffia weave to keep you cool and refreshed.

3½" brim. Inner drawstring adjusts fit. Packing not recommended. 100% raffia exclusive of trim, cotton lining. Do not wash. (028-5)

Style: MOR



natural grey







### Tahiti Cowboy

Color-dyed band and matching stone beads add a punch of color to the basic cowboy. The wire-edged brim lets you adjust the look just the way you like it. 3¼" brim. Inner drawstring adjusts fit. Packing not recommended. 100% raffia exclusive of trim. Do not wash. M (58cm).

Style: **TCOW** (027)



turquoise



taupe



### Catalina Cowboy

Wire-edged brim for perfect shaping with an artsy mix of leather, colored braid and beads to make it interesting. 3" brim. Inner drawstring adjusts fit. Packing not recommended. 100% raffia exclusive of trim. Do not wash. (027)

Style: **CCOW**



natural



mushroom



### Catalina

Hand-crocheted from genuine raffia with a generous brim to keep you cool. Twisted raffia band ties in a bow in the back. 4" brim. Inner drawstring adjusts fit. Packing not recommended. 100% raffia. Do not wash. M (58cm).

Style: **CAT** (025)



natural



mushroom



*"This style is as flattering as it is functional. I have 3 hats now from Wallaroo and nothing but love for all of them."* CINDY K.





## *Tahiti*

The hip, city sister to the Tahiti Cowboy. Accented with a color-dyed band and matching stones, we've got a color for everyone.

1¾" brim. Inner drawstring adjusts fit. Packing not recommended.  
100% raffia exclusive of trim. Do not wash. M (58cm).

**Style: TAH** (027)



red

turquoise

sage



taupe

black



*Raffia is strong, pliable and easy to dye — making it an excellent material for creating hats.*

## *Tina*

Make this hat part of your summer uniform. All-natural crocheted raffia crown is wrapped in jute string twisted with wood beads.

3½" brim. Inner drawstring adjusts fit. Packing not recommended. 100% raffia exclusive of trim.  
Do not wash. M (58cm).

**Style: TIN** (031)



natural





# Women's Collection

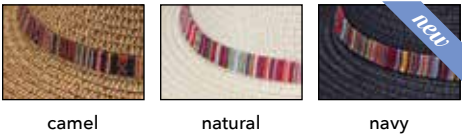
Our women's collection features hats you can wear everyday with comfort and confidence. Offered in a wide variety of colors, silhouettes and styles for any adventure.

new  
color!



## Sedona

The classic fedora shape is updated with a colorful Aztec flair. Structured brim provides significant shade. 3" brim. Inner drawstring adjusts fit. Packable. 100% paper braid exclusive of trim. Spot clean. M (58cm).  
**Style: SED (025)** *New color available January 2021.*



UPF  
50+



## Naomi

Natural woven fibers in earthy neutral shades. 3" brim. Inner drawstring adjusts fit. Packable. 100% paper braid exclusive of trim. Spot clean. M (58cm).  
**Style: NAO (021)**



UPF  
50+







**Caroline**

Tonal color gives this fedora a distinctively refined and feminine look. Flexi-weave fabric makes it travel-ready – just throw it in your bag and go.

2½" brim. Inner drawstring adjusts fit. Packable. 100% polyester exclusive of trim. Spot clean. M (58cm).

**Style: CARO** (025)



ivory



beige

**Gabi**

A ponytail hat that strikes the perfect balance between playful and sophisticated. Made from durable, lightweight Flexi-weave, it is perfect for travel and adventure.

3" brim. Velcro® adjustment. Packable. 100% polyester exclusive of trim. Spot clean. One size fits most.

**Style: GABI** (025)



ivory



beige



BACK

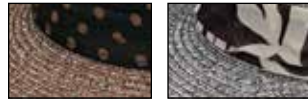




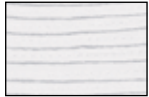
Mia

Made from our innovative Flexi-weave fabric, this hat is lightweight, comfortable and packable. Dressed up with a chiffon scarf, the elegant capeline shape flares out to a wide brim for complete sun protection. 4" brim. Inner drawstring adjusts fit. Packable. 100% polyester exclusive of trim. Spot clean. M (58cm).

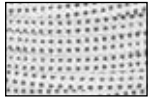
Style: MIA (025)



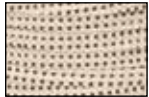
brown combo      black combo



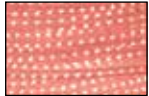
solid white



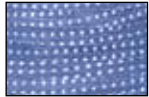
white/black dots



natural/brown dots



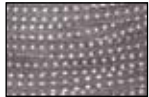
coral/white dots



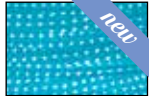
hydrangea/white dots



slate/white dots



grey/white dots



turquoise/white dots



navy/white dots



solid black



black/white dots



Scrunchie

The wire-edged brim can be adjusted to match every mood – down for shy or curvy waves for fun and flirty.

4½" brim. Inner drawstring adjusts fit. Packable. 100% polyester. Handwash cold. M (58cm).

Style: SCR (023)  
New color available January 2021.



*"I get so many compliments on this hat. It looks very dramatic and stylish. I have fair skin and I never worry about overexposure with this hat. I also travel a lot and it packs so easily!"* SUSAN M.





Victoria

The straw hat goes modern with the ultra-lightweight Victoria.  
3½" shaped brim. Inner drawstring adjusts fit. Packable. 100% poly-straw. Handwash cold. M (58cm).  
**Style: VIC (022-5)**



Victoria Fedora

Another Victoria hat to love! A fedora with a full brim and matching cord trim.  
3" brim. Inner drawstring adjusts fit. Packable. 100% poly-straw exclusive of trim, cotton lining. Spot clean. M (58cm).  
**Style: VICF (023)**

Our Victoria hats are made from ultra-lightweight poly-straw. Perfect for travel and available in a wide range of vibrant colors and styles.





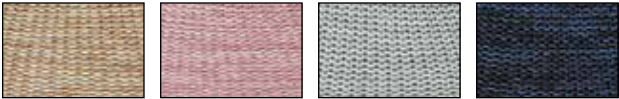


**Tori**

The Victoria family keeps growing. This cloche-style hat is fully lined, thus giving it our coveted UPF 50+ rating.

2½" brim. Inner drawstring adjusts fit. Packable. 100% poly-straw exclusive of trim, cotton lining. Handwash cold. M (58cm).

**Style: TORI** (023-5)



mixed camel    mixed rose    mixed seafoam    mixed navy



**Monroe**

If one is good, then two must be better. Two complimentary colors blend sophistication and style. Faux leather trim.

3" brim. Inner drawstring adjusts fit. Packable. 100% poly-straw exclusive of trim, cotton lining. Spot clean. M (58cm).

**Style: MONR** (025)



beige/mocha    mocha/black



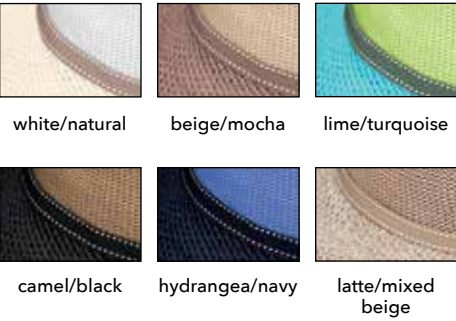




Victoria Two-Toned

Two coordinating colors band together for a flattering, colorful look. 3½" brim. Inner drawstring adjusts fit. Packable. 100% poly-straw exclusive of trim, cotton lining. Spot clean. M (58cm).

Style: VICTWO (023)

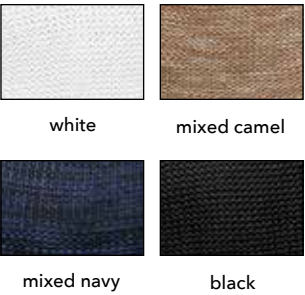


*"I have so many Wallaroos that I had to buy a hat stand."*  
TERRI B.

Victoria Diva

Featuring the same round crown as the original Victoria, the Diva version goes for a more elegant look with its wider brim. 4½" brim. Inner drawstring adjusts fit. Packable. 100% poly-straw. Spot clean. M (58cm).

Style: VICD (022-5)







Breton

Contrasting poly-ribbon braids bring a punch of color to any outfit. Brim can be worn up or down. Leather tie with wood beads.

4" brim. Inner drawstring adjusts fit. Packable. 50% poly-ribbon and 50% poly-braid exclusive of trim. Spot clean. M (58cm).

Style: BRE (021)



hydrangea



navy



red



chocolate

“Purchased in 3 colors. Received my first compliment within 5 minutes of putting it on.” LORI M.

Kristy

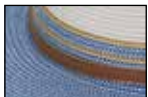
Structured for a classic look, this fedora has lasting style. Faux leather band with metal buckle.

3" brim. Inner drawstring adjusts fit. Packable. 100% polypropylene exclusive of trim. Spot clean. M (58cm).

Style: KRI (023)



ivory/stone



ivory/ice blue

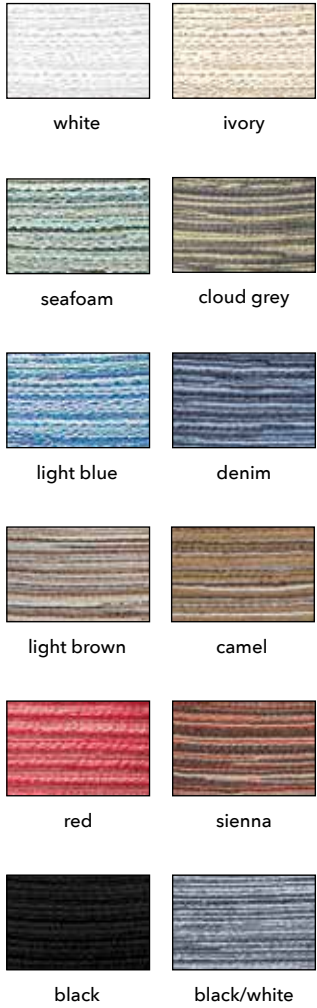


ivory/navy



ivory/black





### Sydney

The Sydney is made with fibers of matching colors woven together into a thin, breathable polyester braid. This classic style has a wide brim with stylish turned-up edges.

3¾" brim. Inner drawstring adjusts fit. Packable. 100% poly-braid. Handwash cold. M (58cm).

Style: **SYD** (021)



Many of our hats travel with ease. See page 66 for information about specific packing methods.

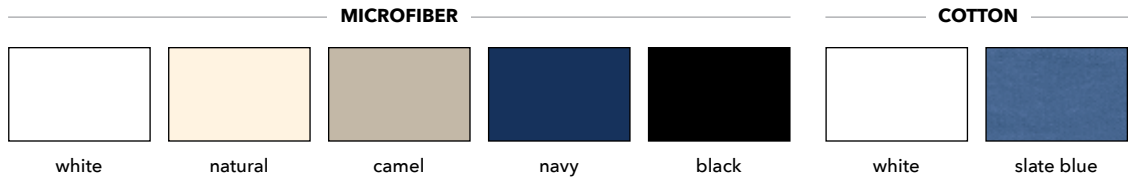
### Casual Traveler

The hat that started it all! After many requests, we are again offering a cotton version, in addition to our versatile microfiber fabric. The adjustable brim can be worn up or down.

4" brim. Inner drawstring adjusts fit. Packable. Available in 100% microfiber or 100% cotton. Handwash cold. M (58cm).

Style: **CAST** (021) Microfiber

Style: **CASTCV** (021) Cotton







**Seaside**

Lightweight, quick-drying microfiber is meant for adventure. Wide brim blocks the sun, while breathable mesh lets air through the crown for cool comfort. Matching chin strap.

4" brim. Inner drawstring adjusts fit. Packable. 100% microfiber. Handwash cold. M (58cm).

**Style: SEAS** (025)



natural



camel



**Aqua Hat**

Hit the beach or the waves with the security of water-safe, wrap-around sun protection. Matching chin strap.

3½" brim. Stretches to fit. Packable. 100% Lycra®. Handwash cold. M (58cm).

**Style: AQUH** (021)



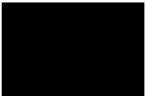
white



turquoise



navy



black



**Aqua Visor**

Quick-drying and lightweight fabric lets you enjoy any water activity without leaving your hat behind.

4" brim. Tie in back adjusts to any size. Packable. 100% Lycra®. Handwash cold. One size fits most.

**Style: AQU** (015)



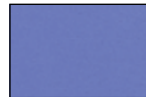
white



hot pink



turquoise



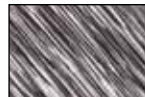
hydrangea



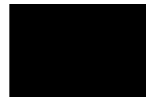
royal blue



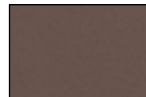
navy



black combo



black



mocha



*"Can wear kayaking and under my helmet when biking. Blocks more sun than most."* TERRI G.



# Petite Collection

As we have grown, the demand for sizing options has as well. These hats have smaller crowns and brims to better suit our petite customers.



## Petite Victoria

Our modern version of the straw hat is lightweight and ultra-comfortable. The brim is scaled down for petite sizes.  
3 3/8" brim. Inner drawstring adjusts fit. Packable. 100% poly-straw. Handwash cold. XS/S (55cm).

Style: **PVIC** (022-5)



*"Love my new hat! And it fits!!  
How awesome is that for those of us  
with small heads?"* PATRICIA B.

UPF  
50+



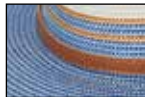
## Petite Kristy

This popular and flattering style is well-suited to smaller frames. Faux leather band with metal buckle.  
3" brim. Inner drawstring adjusts fit. Packable. 100% polypropylene exclusive of trim. Spot clean. XS/S (55cm).

Style: **PKRI** (023)



ivory/stone



ivory/ice blue



UPF  
50+



## Petite Sedona

Accented by a striking embroidered band, the Sedona is the perfect addition to your best dressed list.  
2 3/4" brim. Inner drawstring adjusts fit. Packable. 100% paper braid exclusive of trim. Spot clean. XS/S (55cm).

Style: **PSED** (025)



camel







**Hailey**

Made from sustainable, natural raffia, this cowboy hat has a scaled-down wire-edged brim to flatter those with petite heads. Raffia string and suede cord give it a simple, casual style.

2¾" brim. Inner drawstring adjusts fit. Packing not recommended. 100% raffia exclusive of trim. Do not wash. S (57cm).

**Style: HAI (029)**



natural



mushroom



**Petite Catalina**

A long-time favorite scaled down for a wider audience. Twisted raffia band ties in a bow in the back.

3½" brim. Inner drawstring adjusts fit. Packing not recommended. 100% raffia. Do not wash. XS/S (55cm).

**Style: PCAT (025)**



natural



mushroom

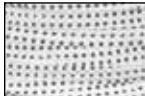


**Petite Scrunchie**

The adjustable, wire-edged brim gives this hat its personality. Curvy or straight, choose your most flattering look.

3½" brim. Inner drawstring adjusts fit. Packable. 100% polyester. Handwash cold. XS/S (55cm).

**Style: PSCR (023)**



white/  
black dots



natural/  
brown dots



fuchsia/  
white dots



turquoise/  
white dots



grey/  
white dots



slate/  
white dots



navy/  
white dots



black/  
white dots





Men's Collection

Our men's hats are designed for active adventure. Fishing, hiking or keeping up with the kids – life keeps you busy and we'll keep you covered with lightweight, comfortable, durable choices.



GREAT  
FOR MEN &  
WOMEN



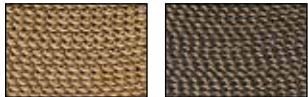
GREAT  
FOR MEN &  
WOMEN

Logan

A hat for any adventure. With a wide brim and a faux leather chin strap, it provides protection from the elements and stays secure in the wind.

3¼" brim. Inner drawstring adjusts fit. Packable.  
100% polypropylene exclusive of trim. Spot clean.  
M/L (59cm) and L/XL (61cm).

Style: LOG (025)



camel

dark brown

UPF  
50+



Palm Beach

This just may be the perfect hat! Made from revolutionary Flexi-weave fabric, this hat is designed for comfort. Take it anywhere – it can be packed without losing its shape.

2¾" brim. Internal elastic clip adjustment. Packable. 100% polyester exclusive of trim. Spot clean. M/L (59cm) and L/XL (61cm).

Style: PLMBCH (026)



ivory

beige

UPF  
50+



“Excellent material and workmanship, and I love the fact that it is adjustable.” JAMES F.



GREAT  
FOR MEN &  
WOMEN



## Cabo

We've reinvented the classic surf-style hat. Great for travel, it packs easily and has a chin strap for wind resistance. Embroidered trim.

3¼" brim. Inner drawstring adjusts fit. Packable. 100% paper braid exclusive of trim, cotton lining. Spot clean. M/L (59cm) and L/XL (61cm).

**Style: CABO** (026)



natural/surf trim

UPF  
50+



*"This hat is very comfortable, keeps its shape and is great in the wind."* JOHN E.

GREAT  
FOR MEN &  
WOMEN



## Justin

Everyday style for men with impeccable taste.

2" brim. Inner drawstring adjusts fit. Packable. 100% paper braid exclusive of trim. Spot clean. M/L (59cm) and L/XL (61cm).

**Style: JUS** (022-5)



natural



## Charleston

Perfect for a weekend getaway, this twisted seagrass hat is island inspired. Removable chin strap with adjustable toggle. Metal eyelets and a faux suede band.

3" brim. Inner drawstring adjusts fit. Packing not recommended. 100% seagrass exclusive of trim, cotton lining. Spot clean. M/L (59cm) and L/XL (61cm).

**Style: CHAR** (025)



natural

UPF  
50+







### Avery

Lightweight sophistication for hot summer days. Metal eyelets provide air flow to cool you down.

2½" brim. Inner drawstring adjusts fit. Packing not recommended. 100% Japanese glazed paper exclusive of trim. Do not wash. M/L (59cm) and L/XL (61cm).

**Style: AVE** (027)



natural



### Blake

Zig zag stitching adds a modern touch to a classic look. The sturdy brim offers ample shade for every summer adventure. Black ribbon detail.

3¼" brim. Inner drawstring adjusts fit. Packable. 100% paper braid exclusive of trim. Spot clean. M/L (59cm) and L/XL (61cm).

**Style: BLAK** (025)



natural



ivory



### Palmer

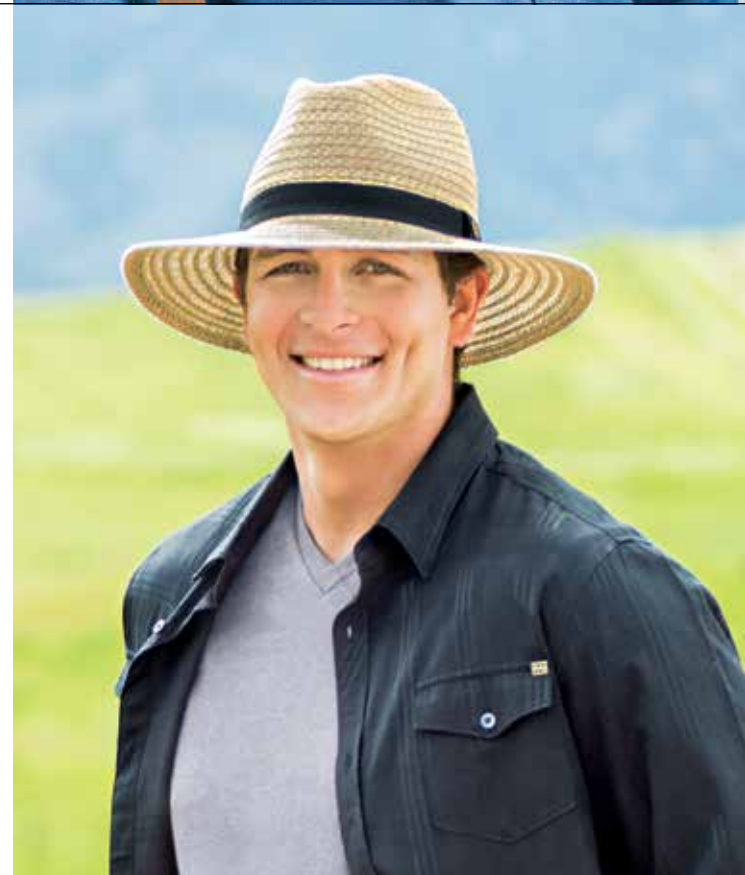
This lightweight fedora is great for travel - just throw it in your suitcase and go. It bounces right back!

3½" brim. Inner drawstring adjusts fit. Packable. 100% paper braid exclusive of trim. Spot clean. M/L (59cm) and L/XL (61cm).

**Style: PAL** (025)



natural







### Outback

A modern fedora with a stylish look. Brown suede band.

3" brim. Inner drawstring adjusts fit. Packable. 100% paper braid exclusive of trim. Spot clean. M/L (59cm) and L/XL (61cm).

**Style: OUT** (025)



brown

natural



### Gabe

Our signature, ultra-lightweight poly-straw material has consistently been one of our bestsellers. The knitted weave is breathable and comfortable, as well as incredibly durable. Faux suede trim.

3" brim. Inner drawstring adjusts fit. Packable. 100% poly-straw exclusive of trim. Spot clean. M/L (59cm) and L/XL (61cm).

**Style: GAB** (025)



suede







## Shelton

By popular demand, we've designed this outdoor hat with an back flap for complete neck protection. Perfect for all-day events like fishing, hiking or watching a baseball game. A Velcro® pocket inside the brim stows the flap when not needed. Adjustable chin strap.

2½" brim, 8½"-long flap. Inner drawstring adjusts fit. Packable. 100% cotton. Handwash cold. M/L (59cm) and L/XL (61cm).

**Style: SHE** (025)



camel/navy



*"Fits well and the strap helps keep the hat on in very windy conditions. I like the blue under the brim – it's great in bright sun."* JOSEPH B.



## Explorer

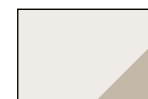
There's no adventure this hat can't handle. Wide, microfiber foam brim allows the hat to float in the water. Water repellant and lightweight. Adjustable chin strap.

3" brim. Inner drawstring adjusts fit. Packable. 100% microfiber. Handwash cold. M/L (59cm) and L/XL (61cm).

**Style: MEXP** (021)



camel/navy



natural/camel

## Jr. Explorer

A smaller version for kids.

2½" brim in the front, 3½" in the back. Inner drawstring adjusts fit. Packable. 100% microfiber. Handwash cold. S (56cm) fits ages 5-12.

**Style: JREXP** (013-5)



camel/navy





# Children's Collection

Children need to learn about sun protection early so they can develop life-long healthy habits. Our complete line of comfortable, colorful hats covers newborns to teens.



## Platypus

Extra-wide brim provides added protection for active toddlers. Velcro® chin strap.

2¼" brim in front, 3¼" back. Crushable. Available in 100% cotton or water-resistant, quick-dry microfiber. Handwash cold. 49cm (fits ages 1-2½ years).

**Style: PLA** (012-5) Cotton  
**Style: MPLA** (012-5) Microfiber



### MICROFIBER



aqua



pink

### COTTON



fuchsia dots



seersucker



pink roses



## Aloha Hat

An adorable bucket hat in a cheeky island-inspired pattern.

2" brim. Crushable. 100% cotton. Handwash cold. 46cm fits ages 3-12 months.

**Style: ALO** (012-5)



denim blue



blue floral

## Croc & Shark

Clever cut-outs up the cute factor on these adorable embroidered hats. Cotton chin strap.

3¼" brim. Inner drawstring adjusts fit. Crushable. 100% cotton exclusive of trim. Handwash cold. 52cm (fits ages 2-5) and 55cm (fits ages 5-10).

**Style: CRO** (014-5) Pink Crocodile—52cm

**Style: SHA** (014-5) Shark—52cm

**Style: CRO55** (014-5) Pink Crocodile—55cm

**Style: SHA55** (014-5) Shark—55cm



pink crocodile



blue shark



## Petite Nantucket

Brightly colored ribbons are sewn together to create brilliant patterns.

2½" brim. Inner drawstring adjusts fit. Crushable. 100% poly-ribbon. Handwash cold. 52cm (fits ages 2-5) and 54cm (fits ages 4-8).

**Style: PNAN52** (013-5) 52cm

**Style: PNAN** (013-5) 54cm



jewel tones  
(52cm only)



rainbow tones  
(52cm & 54cm)



fuchsia tones  
(54cm only)



aqua tones  
(54cm only)



hot pink tones  
(54cm only)



lilac tones  
(54cm only)



## Riley

Flowers and palm trees mean fun in the sun and that's just what you'll get!

2½" brim. Inner drawstring adjusts fit. Crushable. 100% cotton exclusive of trim. Handwash cold. 55cm (fits ages 5-12 years).

**Style: RIL** (014-5)



denim blue



blue floral





## Floor Stand

A fully stocked Wallaroo hat stand perfectly displays our wide selection of styles and colors. 360° spinner base, 24 hat hooks, 2 straight hooks for visors, and a mirror panel on both sides. 16" base, 78"H.

**Style: WALLFS** (195)

### SIZING

CM	IN	UK	US	GENERAL
54	21¼	6⅝	6¾	XS
55	21⅝	6¾	6⅞	XS
56	22	6⅞	7	S
57	22½	7	7⅞	S
58	22⅞	7⅞	7¼	M
59	23¼	7¼	7⅝	M
60	23⅝	7¾	7½	L
61	24	7½	7⅞	L

### PACKING

The hangtag on each hat describes the packing technique for that hat.



#### PACK FLAT

Do not crease, do not roll



#### ROLL IT

Gently flatten and roll



#### STUFF IT

Fill the crown with soft items



#### "SOFT TACO" FOLD

Fold in half gently, do not crease

### ADJUSTING

All of our hats can be adjusted for size and windy conditions.



#### DRAWSTRING

Tie to the proper fit



#### ELASTIC CLIP

A more comfortable, secure fit



#### CHINSTRAP

Adjust the toggle under your chin for a secure fit



#### VELCRO®

Peel and stick for the best fit

### WASHING



#### SPOT CLEAN

Wipe the spot with a damp cloth, dry on low heat



#### HANDWASH COLD

Use cold water and mild liquid soap

## Sales Representatives

**HI** Bonnie Bowles  
C: (808) 778-5896  
E: bbsaleshi@gmail.com

**OR, WA** Laura Bedell  
C: (206) 719-2227  
E: laurambedell@gmail.com

**ID, OR, WA** Jill Grover - golf  
C: (541) 556-1156  
E: jillmgrover@gmail.com

**CA (North), NV** Harmony Hayner  
O: (415) 343-5445  
E: harmony@relishsf.com

**CA (Central)** Kim Lunetta  
C: (626) 422-4423  
E: kim.lunetta@gmail.com

**CA (Southern)** LeeAnn Stevens  
C: (949) 636-4420  
E: leeann.stevens1@icloud.com

**CO, ID, MT, NM, UT, WY**  
Patty Chovan  
C: (970) 846-2075  
O: (970) 879-4515  
E: patty@yampavalleyoutdoor.com

**AZ, IA, IL, KS, MI, MN, MO, NE, NV, NM, ND, OH, SD, WI**  
Kelly & Elly Jelacic  
C-Kelly: (480) 257-6167  
C-Elly: (480) 510-4394  
E: info@jelacic.com

**AZ, CO, NV, NM** Lisa Henderson - golf  
C: (602) 909-9130  
E: lisahenderson7@cox.net

**IN** Lisa Dickerson  
C: (480) 352-4201  
E: lisadck@aol.com

**TX (Central)** Tim Gaskin  
C: (512) 922-5570  
E: tim@timgaskin.net

**TX (North)** Kelly Green Navarre  
C: (214) 505-0351  
E: noaa19@yahoo.com

**TX** Doug Jones - golf  
C: (817) 296-9454  
E: djones92ap@gmail.com

**AR, OK** Alvin Olson  
C: (405) 250-3317  
E: olsonandassoc@gmail.com

**TX (SE), LA** David Dagley  
C: (903) 391-1017  
E: dtdagley@hotmail.com

**MA, ME, NH, DC, VT** Kathy Shannon  
C: (617) 921-1815  
P: (781) 444-3113  
E: kathy@shannonanddaughters.com

**PA** Deanna Papa  
C: (610) 392-2020  
E: dyp131@msn.com

**RI** Karen Wood  
C: (781) 534-2399  
E: kswood50@gmail.com

**CT** Stu Douglas  
C: (401) 595-4362  
E: stu@studouglas.com

**CT (golf), DE, MD, NJ, NY** Mary Repke  
C: (973) 986-9011  
E: maryerepke@gmail.com

**FL** Amy Stickler  
C: (941) 737-5978  
E: ajsales101@gmail.com

**FL (East)**  
Marianne Deibel - golf & tennis  
C: (954) 655-1365  
E: marianne.deibel@gmail.com

**AL, GA, KY, MS, MO, NC, SC, TN, VA, WV** Robin & Sandy Roberts  
C-Robin: (770) 331-9763  
C-Sandy: (828) 371-0444  
E: rtwosales@gmail.com

**Caribbean** Gigi Duncan  
C: (869) 762-3000  
E: gigisellsthecaribbean@gmail.com

### INTERNATIONAL DISTRIBUTORS

**Canada** Donald W. Maier  
Modinno Enterprises  
P: (604) 760-8265  
E: donmaier@modinno.com

**Columbia**  
Ana Marin or Ana Milena Franco  
Laser Dermatologico Imbanaco S.A.  
P: 5731 5533 2494  
E: ana.marin@laskin.com.co  
E: ana.franco@laskin.com.co

**Costa Rica** Laura Muller  
DermatALLogy  
P: 506-2289-3458  
E: laura@dermatallergy.com

**Ecuador/Spain** Maria Sarmiento  
Infocity S.A.  
P: 593 9 99269468  
E: upfsolutions@gmail.com

**UK/Europe** Lisa Jackson  
Masku Ltd  
P: 0870 8610 6000  
E: sales@wallarooohats.co.uk

**Israel** Orit Cohen  
PC Hetz Ltd  
P: 972-3-5582324  
www.feel-shop.co.il

**Japan** Aya Takayanagi  
Prograce, Inc.  
P: +81-27-386-9348  
E: aya@prograceinc.com

**Mexico** Paulina Garcia  
Sol Protector  
P: +52 (33) 38171154  
E: ventas@sol-protector.com

## Index

Aloha Hat .....	60	Catalina .....	25	Kristy .....	41	Petite Kristy .....	47	Shelton .....	58
Amelia .....	11	Catalina Cowboy.....	24	Laguna.....	14	Petite Nantucket.....	61	St. Tropez Trilby .....	21
Aqua Hat .....	44	Charleston .....	53	Logan.....	50	Petitie Scrunchie.....	49	Sydney .....	42
Aqua Visor.....	45	Charlie.....	7	Malibu .....	22	Petite Sedona .....	47	Tahiti .....	26
Aria .....	12	Croc & Shark.....	61	Mia .....	32	Petite Victoria.....	46	Tahiti Cowboy.....	24
Aspen .....	5	Darby.....	9	Monroe.....	37	Platypus.....	60	Tina .....	27
Avery.....	54	Explorer.....	59	Montecito.....	20	Riley .....	61	Tori .....	36
Bianca.....	17	Floor Stand .....	62	Monterey.....	6	Riviera.....	13	Victoria .....	34
Blake.....	55	Gabe.....	57	Morgan.....	23	Sausalito.....	15	Victoria Diva.....	39
Breton.....	40	Gabi.....	31	Naomi.....	29	Savannah.....	19	Victoria Fedora .....	35
Cabo .....	52	Hailey.....	48	Ojai .....	8	Savannah Visor .....	18	Victoria Two-Toned.....	38
Cambria.....	4	Josie .....	16	Outback .....	56	Sawyer.....	60		
Camille .....	10	Jr. Explorer.....	59	Palm Beach .....	51	Scrunchie .....	33		
Caroline.....	30	Julia .....	17	Palmer .....	55	Seaside.....	44		
Casual Traveler .....	43	Justin .....	53	Petite Catalina.....	48	Sedona .....	28		





## WALLAROO HAT COMPANY

3155 Sterling Circle  
Boulder, Colorado 80301  
TEL: 303-494-5949  
TOLL FREE: 1-888-925-2766  
FAX: 303-245-8720  
[www.wallaroorhats.com](http://www.wallaroorhats.com)



©2020-2021 by Wallaroo Hat Company, LLC. All rights reserved.

