



*Celebrating 20 Years*



*2020*





Gabi, see page 27.



More than ever, I am reminded that change is the only constant in life. In celebrating our 20th anniversary, we see an opportunity to honor this simple truth. Through mindful growth and innovation, we will continue our commitment to quality and customer service.

This year, we are excited to bring you Flexi-weave™ – a new, packable fabric with UPF 50+ sun protection (pages 26, 27, 35, 51) – and after years of requests, we have more than doubled our petite options (pages 46-49). Online, we have been busy updating and improving our website and social media, with the goal of making shopping Wallaroo as easy and versatile as wearing our hats.

Finally, our top priority is our people – the customers and employees who make us successful. Wallaroo is proud to be a global leader in the sun-protective headwear industry, and we can’t do that without your support. We remain committed to our mission of skin cancer research, education and prevention, and we maintain our B Corps status (see side bar) to demonstrate our dedication to social responsibility. If we leave this world a better place than we found it, we all succeed.

The best is yet to come. Yours in adventure and love,

Stephanie Carter  
Owner & Co-founder

*It's a sunny life. Wear your hat.®*



Cover: Sausalito, see page 4. On Stephanie, above: Sydney Fedora, from our new Carkella line, see more at [www.carkella.com](http://www.carkella.com).

# 2020 Collection

THE "W" COLLECTION .....	4
WOMEN .....	26
PETITES.....	46
MEN .....	50
CHILDREN .....	60
EXTRAS .....	62
INDEX .....	63

Look for our sun icons throughout the catalog to determine which hats are UPF rated.



Our 30+ fabrics block 96% of the sun’s damaging ultraviolet rays, while UPF 50+ blocks an impressive 97.5%. Always remember, a Wallaroo hat only protects the skin it covers. Safeguard the rest of your body by wearing sunscreen and sunglasses.

The Skin Cancer Foundation recommends the material of every Wallaroo hat with a UPF rating and a 3" brim or wider as an effective UV protectant.



**Wallaroo Sun Protection Commitment:**

We promise that each year we will donate 1% of our profits to skin cancer research, education and prevention in the United States.



**We are a Certified B Corporation:** B Corps must meet rigorous standards of performance, accountability and transparency. The goal is to use the power of business as a force for good to address social and environmental issues, build strong local communities and provide great places to work. Learn more at [bcorporation.net](http://bcorporation.net).



For sizing information & packing instructions, visit our website at [www.wallarohats.com](http://www.wallarohats.com)



# The W Collection

The W Collection features finely crafted styling and top-quality materials for the best in elegant sophistication.



## Sausalito

Romantic and charming, this hat goes well with any occasion. Lined for extra sun protection. Dramatic 4" brim. Inner drawstring adjusts fit. Packing not recommended. 100% raffia exclusive of trim. Do not wash. (031)

**Style: SAUS**

Available January 2020.



natural



new!

## Charlie

Sophisticated structure and contrast stitching come together in perfect harmony. 2¾" brim. Inner drawstring adjusts fit. Packable. 100% polypropylene exclusive of trim. Spot clean. (025)

**Style: CHAR**

Available January 2020.



ivory/black



new!





## Ojai

The fine detail of the tightly woven diamond pattern showcases the premium construction and style of this hat. Wide 4" brim. Inner drawstring adjusts fit. Packing not recommended. 100% raffia exclusive of trim. Do not wash. (032)

**Style: OJAI**

Available January 2020.



almond



dusty blue



new!

## Darby

The cloche style hat is making a comeback, and we're ready with this bold, new version in black and white. 3" brim, edged in black. Inner drawstring adjusts fit. Packable. 100% polypropylene exclusive of trim. Spot clean. (025)

**Style: DARBY**

Available January 2020.



ivory/black



new!



new  
color!



## Camille

The natural fibers of raffia are comfortable and cool on a hot summer day. The generous 4" brim adds elegance and welcome shade. Contrasting colored raffia sets this apart from the crowd. Inner drawstring adjusts fit. Packing not recommended. 100% raffia. Do not wash. (031)

**Style: CAMI**

New color available January 2020.



natural/  
turquoise



natural/  
mushroom



natural/  
navy

## Monterey

We love fedoras because they are so versatile. Try this one with jeans and watch an everyday look turn into a fashion statement. Blue and white pinstripe band at crown. 2 3/8" brim. Inner drawstring adjusts fit. Packing not recommended. 100% Japanese glazed paper exclusive of trim. Do not wash. (033)

**Style: MNTRY**



natural





new  
color!



## Laguna

The juxtaposition of raw, natural fiber with the clean, structured lines of paper braid shows that opposites really do attract. Faux leather cord accented with gold metal tips bridges the gap. 2 $\frac{7}{8}$ " brim. Inner drawstring adjusts fit. Packable. 50% raffia, 50% paper braid exclusive of trim. Do not wash. (031)

**Style: LAGU**

New color available January 2020.



natural/white



natural/navy



## Amelia

A rounded crown and a 3 $\frac{3}{4}$ " upturned brim create the silhouette for one of our most popular styles. Slim faux leather trim adds a distinct touch. Inner drawstring adjusts fit. Packable. 100% paper braid exclusive of trim. Spot clean. (027)

**Style: AME**



natural



mixed black





new  
color!



Savannah Visor

This Wallaroo combines the elegance of the Savannah with the cooler, lighter benefits of a visor. Oversized 4" brim provides generous sun protection for your face. Velcro® strap adjusts fit. Packable. 100% paper braid. Spot clean. (018-5)

Style: SAVVIS  
New color available January 2020.



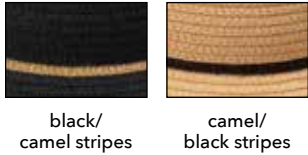
UPF  
50+



Savannah

A 5" wire-edged brim offers maximum sun protection in dramatic style. Inner drawstring adjusts fit. Packable. 100% paper braid. Spot clean. (027)

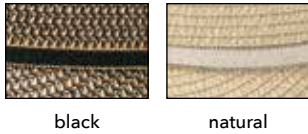
Style: SAV



Bianca

Our glammed-up visor can be worn to the best beach and country clubs in town. 3½" brim with gold-edged suede ribbon at the crown. Velcro strap adjusts fit. Packable. 100% paper braid exclusive of trim. Spot clean. (015-5)

Style: BIA







### Aria

Simple, elegant style with an oversized 4½" brim for maximum sun protection. Tailored ribbon trim. Inner drawstring adjusts fit. Packable. 100% polyester exclusive of trim. Spot clean. (025)

Style: ARI



taupe

black



### Riviera

With a light, narrow braid on the crown and a darker, wider weave for the brim, this hat is a simple study in contrasts. 3½" brim is just the right size. Inner drawstring adjusts fit. Packable. 100% paper braid/poly ribbon exclusive of trim. Spot clean. (027)

Style: RIV



camel/black

natural/tan





new  
color!

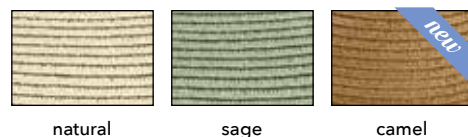


## Montecito

A broad, 4" brimmed Rancher-style hat with clean lines for a modern, polished look. Faux leather cord with gold metal tips. Inner drawstring adjusts fit. Packable. 100% paper braid exclusive of trim. Spot clean. (029)

Style: MONTE

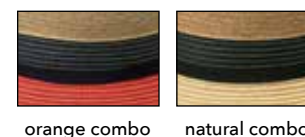
New color available January 2020.



## St. Tropez

Three tones of coordinating colors make a dramatic statement. The generous 4½" brim is perfect for maximum sun protection. Thin ribbon band at crown. Inner drawstring adjusts fit. Packable. 100% paper braid exclusive of trim. Spot clean. (027)

Style: STT



orange combo

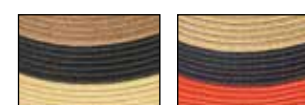
natural combo



## St. Tropez Trilby

Using the same tri-toned hues as the St. Tropez, this trilby offers casual style with a kick. 2" brim. Inner drawstring adjusts fit. Packable. 100% paper braid. Spot clean. (025)

Style: STTR



natural combo

orange combo







### Emma

This hat is guaranteed to inspire “oohs” and “aahs”. The unique, ruffled paper braid gives the impression of lace. Extra-wide 5" brim is edged with plastic cord to hold its shape. Dark brown linen sash with wood buckle adds a bohemian flair. Inner drawstring adjusts fit. Packing not recommended. 100% paper braid exclusive of trim. Do not wash. (029)

Style: EMMA



natural



UPF 50+

### Julia

The 4½" turned-up brim in the front narrows to 3½" in the back. Edged with black trim to complement the Audrey Hepburn-inspired polka dot chiffon scarf. Inner drawstring adjusts fit. Packable. 100% paper braid exclusive of trim. Spot clean. (025)

Style: JUL



natural/black



black/tan



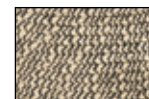
UPF 50+



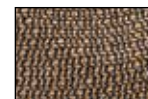
### Josie

Classic fedora style with a 3" wire-edged brim and a black ribbon band. Inner drawstring adjusts fit. Packable. 100% paper braid exclusive of trim. Spot clean. (024-5)

Style: JOS



mixed black



mixed brown







Malibu

An elegant fedora creates a classic look for any occasion. We've dressed up this version with the sparkle of silver and gold-colored beads. 2¾" brim angles down for optimal shade. Inner drawstring adjusts fit. Packing not recommended. 100% raffia exclusive of trim. Do not wash. (031)

Style: MAL



natural mushroom navy



Morgan

The 3½" brim will shade you from the sun, and the fine raffia weave will keep you cool and refreshed. Black grosgrain ribbon band and cotton lining. Inner drawstring adjusts fit. Packing not recommended. 100% raffia exclusive of trim. Do not wash. (028-5)

Style: MOR



natural grey







**Catalina**

Hand-woven from genuine raffia with a 4" brim to keep you cool. Twisted raffia band ties in a bow in the back. Inner drawstring adjusts fit. Packing not recommended. 100% raffia. Do not wash. (025)

**Style: CAT**



natural



mushroom



**Catalina Cowboy**

3" wire-edged brim for perfect shaping and an artsy mix of leather, colored string and beads. Inner drawstring adjusts fit. Packing not recommended. 100% raffia exclusive of trim. Do not wash. (027)

**Style: CCOW**



natural



mushroom



*Raffia is soft, pliable, strong, durable and easy to dye — making it an excellent material for weaving hats. We use high-quality Madagascan raffia, which contains a resin that prevents cracking and brittleness.*

**Tahiti Cowboy**

Color-dyed band and matching stone beads add a punch of color to the basic cowboy. The 3¼" wire-edged brim lets you adjust the look just the way you like it. Inner drawstring adjusts fit. Packing not recommended. 100% raffia exclusive of trim. Do not wash. (027)

**Style: TCOW**



turquoise



taupe





new  
color!



Tahiti

The hip, city sister to the Tahiti Cowboy. Accented with a dyed band and matching stones, we've got a color for everyone. 1¾" brim. Inner drawstring adjusts fit. Packing not recommended. 100% raffia exclusive of trim. Do not wash. (027)

Style: TAH  
New color available January 2020.



Tina

Make this hat part of your summer uniform. Wire-edged brim allows you to customize your look. All-natural crocheted raffia crown is wrapped in jute string twisted with wood beads. 3½" brim. Inner drawstring adjusts fit. Packing not recommended. 100% raffia exclusive of trim. Do not wash. (031)

Style: TIN



natural



Hailey

Made from sustainable, natural raffia, this cowboy hat has a scaled-down 2¾" wire-edged brim to flatter those with petite heads. Raffia string and suede cord give it a simple, casual style. Inner drawstring adjusts fit. Packing not recommended. 100% raffia exclusive of trim. Do not wash. (029)

Style: HAI



natural

mushroom





# Women's Collection

Our women's collection features hats you can wear everyday with comfort and confidence. Offered in a wide variety of colors, silhouettes and styles for any adventure.



## Caroline

Tonal color gives this fedora a distinctively refined and feminine look. Flexi-weave™ fabric makes it travel-ready – just throw it in your bag and go. 2½" brim. Inner drawstring adjusts fit. Packable. 100% polyester exclusive of trim. Spot clean. (025)

**Style: CARO**  
Available January 2020.

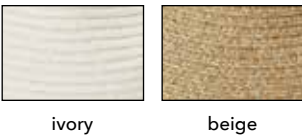


new!

## Gabi

Back by popular demand, the Gabi strikes the perfect balance between playful and sophisticated. Made from Flexi-weave, it is perfect for travel and adventure. Use the Velcro® adjustable back opening to keep your hair off your neck. The brim is 3⅞" in front, tapering to 1½" in back. Packable. 100% polyester exclusive of trim. Spot clean. (025)

**Style: GABI**  
Available January 2020.



BACK



new!

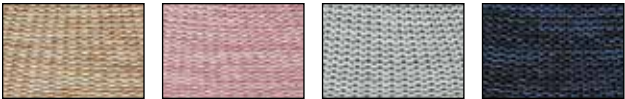




**Tori**

The Victoria family keeps growing. This cloche-style hat is fully lined, thus giving it our coveted UPF 50+ rating. 2½" brim. Inner drawstring adjusts fit. Packable. 100% poly-straw exclusive of trim. Handwash cold. (023-5)

Style: TORI



mixed camel    mixed rose    mixed seafoam    mixed navy



**Monroe**

If one is good, then two must be better. Two complimentary colors blend sophistication and style. 3" brim, cotton lining and faux leather trim. Inner drawstring adjusts fit. Packable. 100% poly-straw exclusive of trim. Spot clean. (025)

Style: MONR



beige/mocha    mocha/black







Victoria Two-Toned

Two coordinating colors band together for a flattering, colorful look. 3½" brim and cotton lining. Inner drawstring adjusts fit. Packable. 100% poly-straw exclusive of trim. Handwash cold. (023)

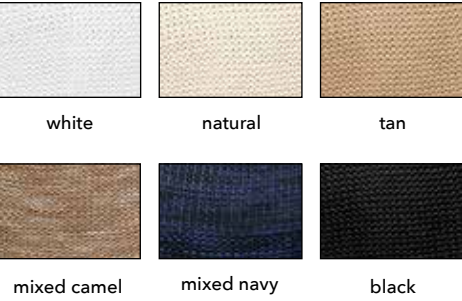
Style: VICTWO  
New color available January 2020.



Victoria Diva

Featuring the same round crown as the original Victoria, the Diva version goes for a more elegant look with its wider 4½" brim. Inner drawstring adjusts fit. Packable. 100% poly-straw. Spot clean. (022-5)

Style: VICD





new  
colors!



white	natural	white
cranberry	hot pink	natural
lemon	coral	mixed beige
lime	seafoam	mixed camel
mixed aqua	turquoise	tan
hydrangea	deep lilac	seafoam
mixed beige	tan	cranberry
mixed camel	suede	mixed denim
french navy	mixed navy	mixed navy
black	mixed black	suede
grey		black

new  
colors!



Victoria

The straw hat goes modern with the ultra-lightweight Victoria. 3½" shaped brim. Inner drawstring adjusts fit. Packable. 100% poly-straw. Handwash cold. (022-5)

Style: VIC  
New colors available January 2020.



Victoria Fedora

Another Victoria hat to love! A fedora with a 3" brim and matching cord trim. Cotton lining. Inner drawstring adjusts fit. Packable. 100% poly-straw exclusive of trim. Spot clean. (023)

Style: VICF  
New colors available January 2020.



Our Victoria hats are made from ultra-lightweight poly-straw. Perfect for travel and available in a wide range of vibrant colors and styles.

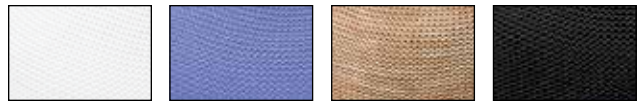




Victoria Sport

Wallaroo's most popular fabric brought to you in a sporty, compact shape. A 3" brim shades your face and neck without getting in the way of your active lifestyle. Inner drawstring adjusts fit. Packable. 100% poly-straw. Spot clean. (022-5)

Style: VICSP



white

hydrangea

mixed camel

black



Mia

Made from our innovative new fabric, Flexi-weave™, this hat is lightweight, comfortable and easily packable. Dressed up with a chiffon scarf, the elegant capeline shape flares out to a wide 4" brim for complete sun protection. Inner drawstring adjusts fit. Packable. 100% polyester exclusive of trim. Spot clean. (025)

Style: MIA



black combo



brown combo





new  
color!



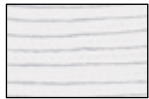
Scrunchie

The 4½" wire-edged brim can be adjusted to match every mood – down for shy or curvy waves for fun and flirty. Inner drawstring adjusts fit. Crushable. 100% polyester. Handwash cold. (023)

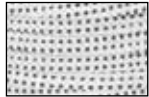
Style: SCR  
New color available January 2020.



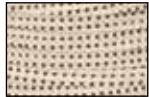
UPF  
50+



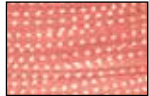
solid white



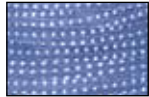
white/black dots



natural/brown dots



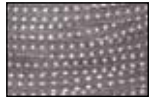
coral/white dots



hydrangea/white dots



slate blue/white dots



grey/white dots



solid navy



navy/white dots



solid black



black/white dots



Naomi

Natural woven fibers in earthy neutral shades. 3" brim with a wood bead trim. Inner drawstring adjusts fit. Packable. 100% paper braid exclusive of trim. Spot clean. (021)

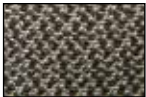
Style: NAO



mixed brown



natural



charcoal

UPF  
50+







*new  
color!*

**Sedona**

The classic fedora shape is updated with a colorful Aztec flair. 3" structured brim provides significant shade. Inner drawstring adjusts fit. Packable. 100% paper braid exclusive of trim. Spot clean. (025)

**Style: SED**



camel

natural

UPF  
50+



**Kristy**

Structured for a classic look, this 3" brimmed fedora has lasting style. Faux leather band with metal buckle. Inner drawstring adjusts fit. Packable. 100% polypropylene exclusive of trim. Spot clean. (023)

**Style: KRI**

New color available January 2020.



ivory/ice blue

ivory/black

ivory/stone

ivory/navy














UPF  
50+





new  
color!



 white	 ivory
 seafoam	 cloud grey
 light blue	 denim
 light brown	 brown
 camel	 sienna
 black	 black/white
 red	

new  
color!







Breton

Contrasting poly-ribbon braids bring a punch of color to any outfit. 4" brim can be worn up or down. Leather tie with wood beads. Inner drawstring adjusts fit. Packable. 50% poly-ribbon and 50% poly-braid exclusive of trim. Spot clean. (021)

Style: BRE  
New color available January 2020.

UPF  
50+



 hydrangea	 navy	 red	 chocolate	 black
---	---	--	--	--

Many of our hats travel with ease. Some pack flat, some roll up, and some can even be crushed and stuffed in a bag!

Sydney

The Sydney is made with fibers of matching colors woven together into a thin, breathable polyester braid. This classic style has a 3¾" brim with stylish turned-up edges. Inner drawstring adjusts fit. Packable. 100% poly-braid. Handwash cold. (021)

Style: SYD  
New color available January 2020.

UPF  
30+







UPF  
50+

### Seaside

Lightweight, quick-drying microfiber is meant for adventure. Wide 4" brim blocks the sun, while breathable mesh lets air through the crown for cool comfort. Chin strap. Inner drawstring adjusts fit. Crushable. 100% microfiber. Handwash cold. (025)

Style: SEAS



natural



camel



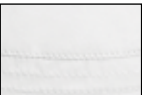
UPF  
50+



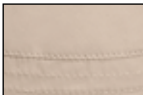
### Piper

Perfect for the beach, this floppy cotton hat is cute and comfortable. 3¾" brim shades you on your search for sand dollars. Chin strap. Inner drawstring adjusts fit. Crushable. 100% cotton. Handwash cold. (022-5)

Style: PIP



white



beige



black



new  
colors &  
fabric!

### Casual Traveler

The hat that started it all! After many requests, we are again offering a cotton version, in addition to our versatile microfiber fabric. The 4" adjustable brim can be worn up or down. Inner drawstring adjusts fit. Crushable. Available in 100% microfiber or 100% cotton. Handwash cold. (021)

Style: CAST Microfiber

Style: CASTCV Cotton

New colors available January 2020.

UPF  
50+



MICROFIBER



white



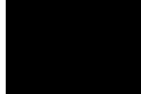
natural



camel



navy



black

COTTON



white



slate blue



new  
patterns  
& color!



Aqua Visor

Quick-drying and lightweight fabric lets you enjoy any water activity without leaving your hat behind. 4" brim. Tie in back adjusts to any size. Packable. 100% Lycra®. Handwash cold. (015)

Style: AQU  
New color and patterns available January 2020.

white

hot pink

turquoise

hydrangea

royal blue

roundabout black

twisted navy

black combo

pink/orange combo

navy

mocha

black



Aqua Hat

Hit the beach or the waves with the security of water-safe, wrap-around sun protection. Matching chin strap. 3½" brim. Stretches to fit. Packable. 100% Lycra®. Handwash cold. (021)

Style: AQUH

white

turquoise

mocha

navy

black



UPF  
50+



# Petite Collection

As we have grown, the demand for sizing options has as well.  
These hats have smaller crowns and brims to better suit petite sizes.



## Petite Victoria

Our modern version of the straw hat is lightweight and ultra-comfortable. The 3 3/8" brim is slightly smaller for petite sizes. Inner drawstring adjusts fit. Packable. 100% poly-straw. Handwash cold. 55cm. (017-5)

**Style: PVIC**  
New colors available January 2020.



UPF  
50+

new!



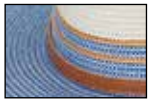
## Petite Kristy

This popular and flattering style is well-suited to smaller frames. Faux leather band with metal buckle. 3" brim. Inner drawstring adjusts fit. Packable. 100% polypropylene exclusive of trim. Spot clean. 55cm. (023)

**Style: PKRI**  
Available January 2020.



ivory/stone



ivory/ice blue



UPF  
50+

new!



## Petite Sedona

Accented by a striking embroidered band, the Sedona is the perfect addition to your best dressed list. Wide 2 3/4" brim gives ample shade. Inner drawstring adjusts fit. Packable. 100% paper braid exclusive of trim. Spot clean. 55cm. (025)

**Style: PSED**  
Available January 2020.



camel







new!

**Petite Catalina**

A long-time favorite scaled down for a wider audience. Twisted raffia band ties in a bow in the back. 3½" brim. Inner drawstring adjusts fit. Packing not recommended. 100% raffia. Do not wash. 55cm. (025)

**Style: PCAT**  
Available January 2020.



natural



mushroom



**Taylor**

A golf hat with a twist. Criss-crossed fabric adds subtle interest. 2¾" brim provides ample shade. Removable cotton chin strap. Inner drawstring adjusts fit. Crushable. 100% cotton. Handwash cold. 56cm. (022-5)

**Style: TAY**



white



tan



navy



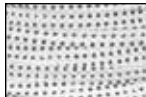
black



**Petite Scrunchie**

The adjustable, wire-edged brim gives this hat its personality. Curvy or straight, choose your most flattering look. 3½" brim. Inner drawstring adjusts fit. Crushable. 100% polyester. Handwash cold. 55cm. (018)

**Style: PSCR**  
New color available January 2020.



white/  
black dots



natural/  
brown dots



fuchsia/  
white dots



turquoise/  
white dots



grey/  
white dots



slate/  
white dots



navy/  
white dots



black/  
white dots





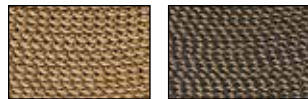


GREAT  
FOR MEN &  
WOMEN!

Logan

A hat for any adventure. With a wide brim and a faux leather chin strap, it provides protection from the elements and stays secure in the wind. 3¼" brim. Inner drawstring adjusts fit. Packable. 100% polypropylene exclusive of trim. Spot clean. Sizes: M/L (59cm) and L/XL (61cm). (025)

Style: LOG  
Available January 2020.



camel dark brown



new!

Palm Beach

This just may be the perfect hat! Made from revolutionary Flexi-weave™ fabric with the Comfy-Fit™ adjustable elastic fit system, this hat is designed for comfort. Take it anywhere – it can be packed without losing its shape. 2¾" brim. Packable. 100% polyester exclusive of trim. Spot clean. Sizes: M/L (59cm) and L/XL (61cm). (026)

Style: PLMBCH



ivory beige







### Cabo

We've reinvented the classic surf-style hat. Great for travel, it packs easily and has a chin strap for wind resistance. Embroidered trim and cotton lining. 3¼" brim. Inner drawstring adjusts fit. Packable. 100% paper braid exclusive of trim. Spot clean. Sizes: M/L (59cm) and L/XL (61cm). (026)

**Style: CABO**



natural/surf trim



### Justin

Everyday style for men with impeccable taste. 2" brim with black ribbon trim. Inner drawstring adjusts fit. Packable. 100% paper braid exclusive of trim. Spot clean. Sizes: M/L (59cm) and L/XL (61cm). (022-5)

**Style: JUS**



natural



### Charleston

Perfect for a weekend getaway, this twisted seagrass hat is island inspired. Removable chin strap with adjustable toggle. Detailed with metal eyelets and a faux suede band. 3" brim and fully lined. Inner drawstring adjusts fit. Packing not recommended. 100% seagrass exclusive of trim. Spot clean. Sizes: M/L (59cm) and L/XL (61cm). (025)

**Style: CHAR**



natural







### Avery

Lightweight sophistication for hot summer days. Metal eyelets provide air flow to cool you down. 2½" brim. Inner drawstring adjusts fit. Packing not recommended. 100% Japanese glazed paper exclusive of trim. Do not wash. Sizes: M/L (59cm) and L/XL (61cm). (027)

**Style: AVE**



natural



### Blake

Zig zag stitching adds a modern touch to a classic look. The sturdy 3¼" brim offers ample shade for every summer adventure. Black ribbon detail. Inner drawstring adjusts fit. Packable. 100% paper braid exclusive of trim. Spot clean. Sizes: M/L (59cm) and L/XL (61cm). (025)

**Style: BLAK**



natural



ivory



### Palmer

This lightweight fedora is great for travel – just throw it in your suitcase and go. It bounces right back! 3½" brim with a black ribbon trim. Inner drawstring adjusts fit. Packable. 100% paper braid exclusive of trim. Spot clean. Sizes: M/L (59cm) and L/XL (61cm). (025)

**Style: PAL**



natural







### Outback

A modern fedora with a stylish look. 3" brim, brown suede band. Inner drawstring adjusts fit. Packable. 100% paper braid exclusive of trim. Spot clean. Sizes: M/L (59cm) and L/XL (61cm). (025)

**Style: OUT**



brown



natural

### Gabe

Our signature, ultra-lightweight poly-straw material has consistently been one of our bestsellers. The knitted weave is breathable and comfortable, as well as incredibly durable. 3" brim with faux leather trim. Inner drawstring adjusts fit. Packable. 100% poly-straw exclusive of trim. Spot clean. Sizes: M/L (59cm) and L/XL (61cm). (025)

**Style: GAB**



suede







### Shelton

By popular demand, we've designed this outdoor hat with an 8½"-long flap for complete neck protection. Perfect for all-day events like fishing, hiking or watching a baseball game. A Velcro® pocket inside the 2½" brim stows the flap when not needed. Adjustable chin strap. Inner drawstring adjusts fit. Crushable. 100% cotton. Handwash cold. Sizes: M/L (59cm) and L/XL (61cm). (025)

**Style: SHE**



camel/navy



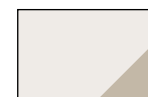
### Explorer

There's no adventure this hat can't handle. Wide, microfiber 3" foam brim allows the hat to float in the water. Water repellant and lightweight. Adjustable chin strap. Inner drawstring adjusts fit. Packable. 100% microfiber. Handwash cold. Sizes: M/L (59cm) and L/XL (61cm). (021)

**Style: MEXP**



camel/navy



natural/camel

### Jr. Explorer

Kid's version has a 2½" brim in the front and 3½" in the back. Adjustable chin strap. Inner drawstring adjusts fit. Packable. 100% microfiber. Handwash cold. 56cm fits ages 5-12. (013-5)

**Style: JREXP**



camel/navy





# Children's Collection

Children need to learn about sun protection early so they can develop life-long healthy habits. Our complete line of comfortable, colorful hats covers newborns to teens.



## Platypus

Extra-wide brim provides added protection for active toddlers. Brim is 2¼" front, 3¼" back, Velcro™ chin strap. Crushable. Available in 100% cotton or water-resistant, quick-dry microfiber. Handwash cold. 49cm fits ages 1-2½ years. (012-5)

**Style: PLA** Cotton  
**Style: MPLA** Microfiber



### COTTON



fuchsia dots    seersucker    pink roses

### MICROFIBER



aqua    pink



## Aloha Hat

An adorable bucket hat in a cheeky island-inspired pattern. 2" brim. Crushable. 100% cotton. Handwash cold. 46cm fits ages 3-12 months. (012-5)

**Style: ALO**



denim blue    blue floral



## Sawyer

A charming bucket hat with the classic look of stripes. 2" brim. Inner drawstring adjusts fit. Crushable. 100% cotton. Handwash cold. 54cm fits ages 4-8 years. (014-5)

**Style: SAWY**



blue stripes    pink stripes

## Croc & Shark

Clever cut-outs up the cute factor on these adorable embroidered hats. 3¼" brim, cotton chin strap. Inner drawstring adjusts fit. Crushable. 100% cotton exclusive of trim. Handwash cold. Sizes: 52cm fits ages 2-5, 55cm fits ages 5-10. (014-5)

**Style: CRO** Pink Crocodile–52cm

**Style: SHA** Shark–52cm

**Style: CRO55** Pink Crocodile–55cm

**Style: SHA55** Shark–55cm



pink crocodile



blue shark



## Petite Nantucket

Brightly colored ribbons are sewn together to create brilliant patterns. 2½" brim. Inner drawstring adjusts fit. Crushable. 100% poly-ribbon. Handwash cold. Sizes: 52cm fits ages 2-5, 54cm fits ages 4-8. (013-5)

**Style: PNAN52** 52cm

**Style: PNAN** 54cm



jewel tones  
(52cm only)



rainbow tones  
(52cm & 54cm)



fuchsia tones  
(54cm only)



aqua tones  
(54cm only)



hot pink tones  
(54cm only)



lilac tones  
(54cm only)



## Riley

Flowers and palm trees mean fun in the sun and that's just what you'll get! 2½" brim. Inner drawstring adjusts fit. Crushable. 100% cotton exclusive of trim. Handwash cold. 55cm fits ages 5-12 years. (014-5)

**Style: RIL**



denim blue



blue floral





Branded merchandise brings the Wallaroo name to a huge audience of outdoor sun-lovers. Promote our unique Solabrella and get the word out.

Solabrella

A lightweight, portable sunshade that provides five times more shade than a standard beach umbrella. Four panels of durable UPF 50+-rated polyester fabric roll up or down – and velcro together – for optimal “wall” placement. Sand anchors and tent pegs keep everything in place. Convenient carry bag. 70"W x 81"H. (055)

Style: SOLA



Presentation is everything. An effective store display increases sales by drawing shoppers’ attention, and a fully stocked Wallaroo hat stand perfectly shows off our wide selection of styles and colors.

Floor Stand

20 pegs can hold up to 40 hats. Wood laminate. 18"L x 18"W x 80"H. (120)

Style: FSTAND



Sales Representatives

- Bonnie Bowles**  
Hawaii  
C: (808) 778-5896  
E: bbsaleshi@gmail.com

**Laura Bedell**  
Oregon, Washington  
C: (206) 719-2227  
F: (888) 900-3151  
E: laurambedell@gmail.com

**Jill Grover (golf)**  
Idaho, Oregon, Washington  
C: (541) 556-1156  
E: jillmgrover@gmail.com

**Harmony Hayner**  
Northern California  
O: (415) 343-5445  
F: (208) 693-2433  
E: harmony@relishsf.com

**LeeAnn Stevens**  
Southern California  
C: (949) 636-4420  
E: leeann.stevens1@icloud.com

**Patty Chovan**  
Colorado, Idaho, Montana, New Mexico, Utah, Wyoming  
C: (970) 846-2075  
P: (970) 879-4515  
F: (970) 870-0731  
E: patty@yampavalleyoutdoor.com

**Kelly & Elly Jelacic**  
Arizona, Nevada, New Mexico  
C-Kelly: (480) 257-6167  
O/F: (480) 837-4426  
E: info@jelacic.com

**Lisa Henderson (golf)**  
Arizona, Colorado, Nevada, New Mexico  
C: (602) 909-9130  
E: lisahenderson7@cox.net

**Kelly Jelacic & Lisa Dickerson**  
Illinois, Indiana, Iowa, Kansas, Michigan, Minnesota, Missouri, Nebraska, North Dakota, Ohio, South Dakota, Wisconsin  
C-Kelly: (480) 257-6167  
C-Lisa: (480) 352-4201  
O/F: (480) 837-4426  
E-Kelly: info@jelacic.com  
E-Lisa: lisadck@aol.com

**Tim Gaskin & Associates**  
Arkansas, Louisiana, Oklahoma, Texas  
C: (512) 922-5570  
F: (512) 346-2404  
E: tim@timgaskin.net

**Doug Jones (golf)**  
Texas  
C: (817) 296-9454  
E: djones92@prodigy.net

**Kathy Shannon**  
Connecticut, Delaware, Maine, Maryland, Massachusetts, New Hampshire, Pennsylvania, Rhode Island, Vermont, Washington DC  
C: (617) 921-1815  
P: (781) 444-3113  
F: (781) 444-3116  
E: kathy@shannonanddaughters.com

**Mary Repke**  
New Jersey, New York  
C: (973) 986-9011  
E: maryerepke@gmail.com

- Amy Stickler**  
Florida  
C: (941) 737-5978  
F: (941) 794-3106  
E: ajsales101@gmail.com

**Marianne Deibel (golf & tennis)**  
Florida (East Coast)  
C: (954) 655-1365  
E: marianne.deibel@gmail.com

**Robin & Sandy Roberts**  
Alabama, Georgia, Kentucky, Mississippi, Missouri, North Carolina, South Carolina, Tennessee, Virginia, West Virginia  
C: (770) 331-9763  
F: (770) 234-6780  
E: rtwosales@gmail.com  
W: www.rtwosales.com

**Gigi Duncan**  
Caribbean  
C: (869) 762-3000  
E: gigisellsthecaribbean@gmail.com

INTERNATIONAL DISTRIBUTORS

- Donald W. Maier**  
Modinno Enterprises  
206 - 4288 Lozells Avenue  
Burnaby, BC V5A 0C7 Canada  
P: (604) 421-6658  
P: (800) 565-9511  
F: (604) 421-6698  
F: (866) 532-9388  
E: info@modinno.com

**Lisa Jackson**  
Direct Offers Ltd  
15 Radar Way  
Christchurch Business Park  
Christchurch, Dorset BH23 4FL England  
P: +44 1202 237210  
C: +44 7879 425567  
E: sales@sun-togs.co.uk

Index

Aloha Hat .....	60	Emma .....	18	Naomi .....	37	Scrunchie .....	36
Amelia .....	11	Explorer.....	59	Ojai .....	6	Seaside.....	42
Aqua Hat .....	45	Floor Stand .....	62	Outback .....	56	Sedona .....	38
Aqua Visor.....	44	Gabe .....	57	Palm Beach .....	51	Shelton .....	58
Aria .....	14	Gabi .....	2, 27	Palmer .....	55	Solabrella .....	62
Avery.....	54	Hailey.....	25	Petite Catalina.....	48	St. Tropez.....	17
Bianca.....	13	Josie .....	19	Petite Kristy .....	47	St. Tropez Trilby .....	17
Blake .....	55	Jr. Explorer.....	59	Petite Nantucket.....	61	Sydney.....	41
Breton.....	40	Julia .....	19	Petitie Scrunchie.....	49	Tahiti .....	24
Cabo .....	52	Justin .....	53	Petitie Sedona .....	47	Tahiti Cowboy.....	23
Camille .....	8	Kristy .....	39	Petite Victoria.....	46	Taylor .....	48
Caroline.....	26	Laguna.....	10	Piper .....	42	Tina .....	25
Casual Traveler .....	43, 64	Logan.....	50	Platypus.....	60	Tori .....	28
Catalina .....	22	Malibu .....	20	Riley .....	61	Victoria .....	32
Catalina Cowboy.....	22	Mia .....	35	Riviera.....	15	Victoria Diva.....	31
Charleston .....	53	Monroe.....	29	Sausalito.....	4	Victoria Fedora .....	33
Charlie .....	5	Montecito.....	16	Savannah.....	13	Victoria Sport .....	34
Croc & Shark.....	61	Monterey.....	9	Savannah Visor .....	12	Victoria Two-Toned.....	30
Darby.....	7	Morgan.....	21	Sawyer .....	60		





PRSRT STD  
U.S. POSTAGE  
BOULDER CO  
PERMIT NO. 34

## WALLAROO HAT COMPANY

3155 Sterling Circle  
Boulder, Colorado 80301  
TEL: 303-494-5949  
TOLL FREE: 1-888-925-2766  
FAX: 303-245-8720  
[www.wallaroorhats.com](http://www.wallaroorhats.com)



©2019-2020 by Wallaroo Hat Company, LLC. All rights reserved.



Casual Traveler, see page 43.