



*2019*





The Monterey, see page 6.



*Because life is meant  
to be lived in color!*

When we started Wallaroo 19 years ago, I was sure of our purpose – to craft sun-protective hats that make you look and feel great. Inspired by visits to my husband's family in Australia – where the threat of skin cancer has long been understood – I wanted to share that awareness far and wide.

From our home base in Colorado, we draw inspiration from nature – the earthy tones of the Rocky Mountains and the brilliant blue of the sunny skies. We focus on quality craftsmanship and functional, fashionable designs so your Wallaroo hat can go with you on all your adventures. We want you to get out there – to play, hike, swim and explore – with complete confidence, knowing you're covered in style.

As a leader in our industry, we also think it's important to look beyond the bottom line. We truly appreciate our amazing employees, and we make time to have fun together. Our commitment to skin cancer education and prevention is ongoing (see side bar), and in 2016, Wallaroo became a Certified B Corporation, joining a global community of companies committed to changing our world for the better. Together, we can make a difference.

Yours in adventure and love,  
**Stephanie Carter, President**

*It's a sunny life. Wear your hat.*



# The 2019 Collection

THE "W" COLLECTION .....	4
WOMEN .....	24
PETITE .....	42
EXTRAS .....	43
MEN .....	44
CHILDREN .....	54

Look for our sun icon throughout the catalog to determine which hats are UPF 50+. These fabrics block 97.5% of the sun's ultraviolet rays. Please remember, a Wallaroo hat only protects the skin it covers. Safeguard the rest of your body by wearing sunglasses and sunscreen.



The Skin Cancer Foundation recommends the material of every Wallaroo hat with a UPF rating and a 3" brim or wider as an effective UV protectant.



**Wallaroo Sun Protection Commitment:**

We promise that each year we will donate 1% of our profits to skin cancer research, education and prevention in the United States.



**We are a Certified B Corporation:** B Corps must meet rigorous standards of performance, accountability and transparency. Their goal is to use the power of business as a force for good to address social and environmental issues, build strong local communities and provide great places to work. Learn more at [bcorporation.net](http://bcorporation.net).



See and learn more at [www.wallaroorhats.com](http://www.wallaroorhats.com)



# The W Collection

Comfort, durability and style are the hallmarks of a Wallaroo hat. The W Collection uses natural fibers and finely crafted trims for elegant sophistication.



## Camille

The natural fibers of raffia are comfortable and cool on a hot summer day. The generous 4" brim adds elegance and welcome shade. Contrasting colored raffia sets this apart from the crowd. Inner drawstring adjusts fit. Packing not recommended. 100% raffia. Do not wash. (031)

**Style: CAMI**

Available January 2019.



natural/  
turquoise



natural/  
mushroom



new!

## Montecito

A broad, 4" brimmed Rancher-style hat with clean lines for a modern, polished look. Neatly trimmed with a faux leather cord and gold end pieces. Inner drawstring adjusts fit. Packable. 100% paper braid exclusive of trim. Spot clean. (029)

**Style: MONTE**

Available January 2019.



natural



sage



new!





Monterey

We love fedoras because they are so versatile. Try this one with jeans and watch an everyday look turn into a fashion statement. Blue and white pinstripe band at crown. 2 3/8" brim. Inner drawstring adjusts fit. Packing not recommended. 100% Japanese glazed paper exclusive of trim. Do not wash. (033)

Style: MNTY  
Available January 2019.



natural



new!

Laguna

The juxtaposition of raw, natural fiber with the clean, structured lines of paper braid shows that opposites really do attract. Leather cord with gold metal end pieces bridges the gap. 2 7/8" brim. Inner drawstring adjusts fit. Packable. 50% raffia, 50% paper braid exclusive of trim. Do not wash. (031)

Style: LAGU  
Available January 2019.



natural/white



new!

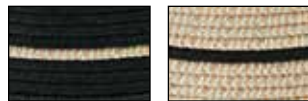




### Savannah Visor

This Wallaroo combines the elegance of the Savannah with the cooler, lighter benefits of a visor. Oversized 4" brim gives you maximum sun protection with breathability. Velcro strap adjusts fit. Rolls up for packing. 100% paper braid. Spot clean. (018-)

**Style: SAVVIS**  
Available January 2019.



black/  
camel stripes      camel/  
black stripes



new!



### Savannah

A 5" wire-edged brim offers maximum shade in dramatic style. An internal drawstring adjusts fit. Rolls up for packing. 100% paper braid. Spot clean. (027)

**Style: SAV**



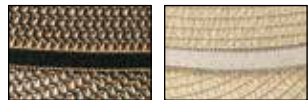
black/  
camel stripes      camel/  
black stripes



### Bianca

Our glammed-up visor can be worn to the best beach and country clubs in town. 3½" brim with gold-edged suede ribbon at the crown. Velcro strap adjusts fit. Rolls up for packing. 100% paper braid exclusive of trim. Spot clean. (015-)

**Style: BIA**



black      natural







**Aria**

Simple, elegant style with an oversized 4½" brim for maximum protection. Tailored ribbon trim. Inner drawstring adjusts fit. Packable. 100% polyester. Spot clean. (025)

**Style: ARI**



taupe

black



**Riviera**

With a light, narrow braid on top and a dark, wider weave down below, this hat is a simple study in contrasts. 3½" brim is just the right size. Inner drawstring adjusts fit. Packable. 100% paper braid. Spot clean. (027)

**Style: RIV**

New color available January 2019.



camel/black

natural/tan



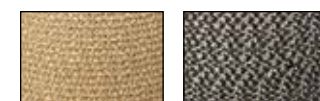




## Amelia

A rounded crown and a 3¾" upturned brim create the silhouette for one of our most popular styles. Slim faux leather trim adds a distinct touch. Inner drawstring adjusts fit. Packable. 100% paper braid exclusive of trim. Spot clean. (027)

Style: AME



natural

mixed black



## St. Tropez

Three tones of coordinating colors make a dramatic statement. The generous 4½" brim is perfect for maximum sun protection. Thin ribbon band at crown. Internal drawstring adjusts fit. Packable. 100% paper braid exclusive of trim. Spot clean. (027)

Style: STT



orange combo

natural combo



## St. Tropez Trilby

Using the same tri-toned hues as the St. Tropez, this trilby offers casual style with a kick. 2" brim. Internal drawstring adjusts fit. Packable. 100% paper braid. Spot clean. (025)

Style: STTR



natural combo

orange combo







### Catalina

Hand-woven from genuine raffia with a 4" brim to keep you cool. Twisted raffia band ties in a bow in the back. An internal drawstring adjusts fit. Packing not recommended. 100% raffia. Do not wash. (025)

**Style: CAT**



natural



mushroom



### Catalina Cowboy

3" wire-edged brim for perfect shaping and an artsy mix of leather, colored string and beads. An internal drawstring adjusts fit. Packing not recommended. 100% raffia exclusive of trim. Do not wash. (026)

**Style: CCOW**



natural



mushroom



ocean blue



### Tina

Everyone looks good in a woven cowboy hat! All natural with a crocheted raffia crown wrapped in jute string twisted with wood beads. 3½" brim. Inner drawstring adjusts fit. Packing not recommended. 100% raffia exclusive of trim. Do not wash. (031)

**Style: TIN**



natural



*Raffia is soft, pliable, strong, durable, and easy to dye — making it an excellent material for weaving hats. We use high-quality Madagascan raffia which contains a resin that prevents cracking and brittleness.*





new  
color!

## Hannah

Darker colors and a studded faux leather trim add a slight twist to the typical cowboy hat. 3" brim is edged with wire for easy adjustments. Inner drawstring adjusts fit. Packing not recommended. 100% raffia exclusive of trim. Do not wash. (031)

Style: HAN



caramel



black

## Malibu

An elegant fedora creates a classic look for any occasion. We've dressed up this version with the sparkle of silver and gold-colored beads. 2¾" brim angles down for optimal shade. Inner drawstring adjusts fit. Packing not recommended. 100% raffia exclusive of trim. Do not wash. (031)

Style: MAL

New color available January 2019.



natural



mushroom



navy



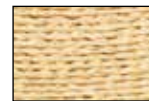




### Napa

The 4¾" wide capeline-style brim will keep you cool. The brown waxed cord is tied with red wooden beads. An internal drawstring adjusts fit. Packing not recommended. 100% raffia exclusive of trim, with a cotton lining. Do not wash. (026-)

Style: NAP



natural



### Celeste

This 5" wire-edged adjustable brim can be worn up or down—or both! Matching suede band and trim. An internal drawstring adjusts fit. Packable. 100% paper braid exclusive of trim. Spot clean. (026-)

Style: CEL



natural



### Hailey

Made from sustainable, natural raffia, this cowboy hat has a scaled-down 2¾" brim to flatter those with petite heads. Raffia string and suede cord give it a simple, casual style. Inner drawstring adjusts fit. Packing not recommended. 100% raffia exclusive of trim. Do not wash. (029)

Style: HAI



natural



mushroom







**Tahiti Cowboy**

The 3¼" wire-edged brim lets you adjust the hat just the way you like it. An internal drawstring adjusts fit. Packing not recommended. 100% raffia exclusive of trim. Do not wash. (027)

**Style: TCOW**



turquoise



taupe



**Tahiti**

The hip, city sister to the Tahiti Cowboy. 1¾" brim. An internal drawstring adjusts fit. Packing not recommended. 100% raffia exclusive of trim. Do not wash. (027)

**Style: TAH**



red



turquoise



taupe



black



new color!

**Morgan**

The 3½" brim will shade you from the sun, and the fine raffia weave will keep you cool and refreshed. Black grosgrain ribbon band and cotton lining. An internal drawstring adjusts fit. Packing not recommended. 100% raffia exclusive of trim. Do not wash. (028-)

**Style: MOR**

New color available January 2019.



natural



grey







Emma

This hat is guaranteed to inspire “oohs” and “aahs”. The unique, ruffle paper braid gives the impression of lace. Extra-wide 5" brim is edged with plastic cord to hold its shape. Dark brown linen sash with wood buckle adds a bohemian flair. Inner drawstring adjusts fit. Packing not recommended. 100% paper braid exclusive of trim. Do not wash. (029)

Style: EMMA



natural



Julia

The 4½" turned-up brim in the front narrows to 3½" in the back. Edged with black trim to complement the Audrey Hepburn-inspired polka dot chiffon scarf. An internal drawstring adjusts fit. Packable. 100% paper braid exclusive of trim. Spot clean. (025)

Style: JUL



natural/black



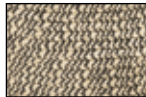
black/tan



Josie

Classic fedora style with a 3" adjustable brim and a black ribbon band. An internal drawstring adjusts fit. Packable. 100% paper braid exclusive of trim. Spot clean. (024-)

Style: JOS



mixed black



mixed brown





# Women's Collection

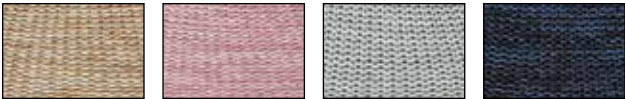
Our women's collection features a wide array of colors, styles and materials to suit any occasion.



## Tori

The Victoria family keeps growing. This cloche-style hat is fully lined, thus giving it our coveted UPF 50+ rating. 2½" brim. Inner drawstring adjusts fit. Rolls up for packing. 100% poly-straw. Handwash cold. (023-)

**Style: TORI**  
Available January 2019.



mixed camel    mixed rose    mixed seafoam    mixed navy



new!

## Monroe

If one is good, then two must be better. Two complimentary colors blend sophistication and style. 3" brim, cotton lining and faux leather trim. Inner drawstring adjusts fit. Packing not recommended. 100% poly-straw. Spot clean. (025)

**Style: MONR**  
Available January 2019.



beige/mocha    mocha/black



new!





Victoria Two-Toned

Two coordinating fabric colors band together for a flattering, colorful look. 3½" brim and cotton lining. An internal drawstring adjusts fit. Packable. 100% poly-straw. Spot clean. (023)

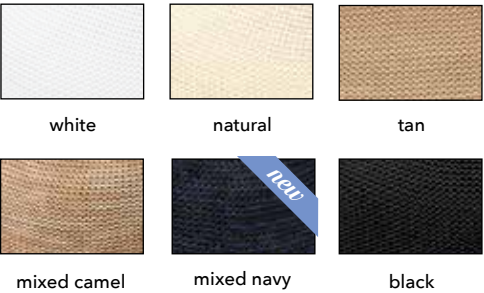
Style: VICTWO



Victoria Diva

Featuring the same round crown as the original Victoria, the Diva version goes for a more elegant look with its wider 4½" brim. An internal drawstring adjusts fit. Packable. 100% poly-straw. Handwash cold. (022-)

Style: VICD  
New color available January 2019.



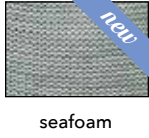
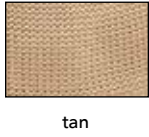
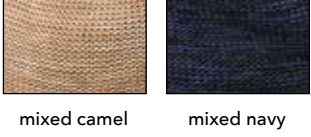
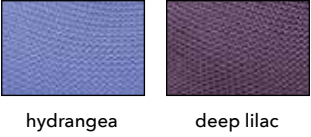
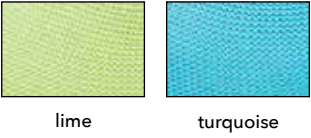
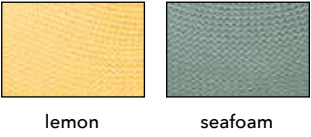
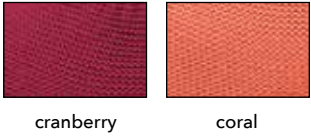
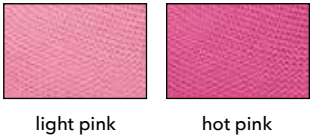
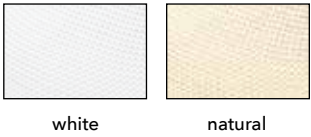




Victoria

The straw hat goes modern with the ultra-lightweight Victoria. 3½" shaped brim. An internal drawstring adjusts fit. Packable. 100% poly-straw. Handwash cold. (022-)

Style: VIC



Victoria Fedora

Another Victoria hat to love! A fedora with a 3" brim and matching cord trim. An internal drawstring adjusts fit. Packing not recommended. 100% poly-straw with cotton lining. Spot clean. (023)

Style: VICF  
New color available January 2019.



Our Victoria hats are made from an ultra-lightweight poly-straw. Perfect for all-day wear, they are great for travel and are available in a wide range of vibrant colors and styles.

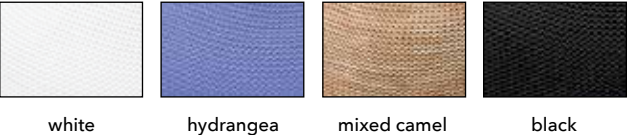




**Victoria Sport**

Wallaroo's most popular fabric brought to you in a sporty, compact shape. A 3" brim shades your face and neck without getting in the way of your active lifestyle. Inner drawstring adjusts fit. Packable. 100% poly-straw. Handwash cold. (022-)

**Style: VICSP**



**Kristy**

Structured for a classic look, this 3"-brimmed fedora has lasting style. An internal drawstring adjusts fit. Packable. 100% poly-propylene. Spot clean. (023)

**Style: KRI**

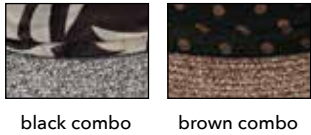


**Mia**

A soft, polyester braid creates comfort you can wear all day. Dressed up with a chiffon scarf, the elegant capilene shape flares out to a wide 4" brim for complete sun protection. An internal drawstring adjusts fit. Packable. 100% polyester exclusive of trim. Spot clean. (025)

**Style: MIA**

Available January 2019.



*new!*

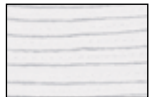




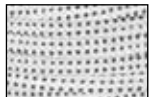
**Scrunchie**

The 4½" wire-edged brim can be adjusted to match every mood—down for shy or curvy waves for fun and flirty. An internal drawstring adjusts fit. Crushable. 100% polyester. Handwash cold. (023)

**Style: SCR**



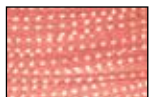
solid white



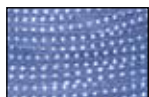
white/  
black dots



natural/  
brown dots



coral/  
white dots



hydrangea/  
white dots



grey/  
white dots



solid navy



navy/  
white dots



solid black



black/  
white dots



**Harper**

Make waves—literally AND figuratively—with this dramatic folded ribbon hat. 4¼" brim is edged with a micro-wire for complete shaping control. Faux leather trim. Packable. An internal drawstring adjusts fit. 100% poly-ribbon. Handwash cold. (022-)

**Style: HAR**



white



camel



cranberry



black



**Naomi**

Natural woven fibers in earthy shades of brown. 3" brim with a wooden bead trim. An internal drawstring adjusts fit. Rolls up for packing. 100% paper braid exclusive of trim. Spot clean. (021)

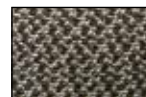
**Style: NAO**



mixed brown



natural



charcoal





new  
color!



### Sedona

The classic fedora shape is updated with a colorful Aztec flair. 3½" structured brim provides significant shade. Inner drawstring adjusts fit. Packable. 100% paper braid. Spot clean. (025)

**Style: SED**

New color available January 2019.



camel



natural



### Naples

This fun, colorful fedora features a 3" wire-edged brim and leather trim. An internal drawstring adjusts fit. Packable. 100% paper braid exclusive of trim. Spot clean. (022-)

**Style: NAPL**



ivory



camel



orange



black



TWO  
SIZES!



### Trilogy Trilby

The trilby style is so versatile, the whole family can wear it! With its neat 1¾" brim and navy and white striped ribbon accent, it will suit any occasion. An internal drawstring adjusts fit. Packable. 100% paper braid exclusive of trim. Spot clean. (022)

Available in two sizes:

(58cm) **Style: WTRI** and (61cm) **Style: MTRI**



natural/navy



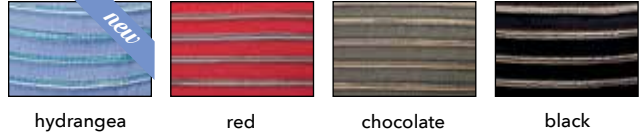




**Breton**

Contrasting poly-ribbon braids bring a punch of color to any outfit. 4" brim can be worn up or down. Natural wooden-beaded leather tie. An internal drawstring adjusts fit. Rolls up for packing. 100% poly-ribbon exclusive of trim. Spot clean. (021)

**Style: BRE**  
New color available January 2019.



*Many of our hats travel with ease. Some pack flat, some roll up, and some can even be crushed and stuffed in a bag!*

**Sydney**

The Sydney is made with fibers of matching colors woven together into a thin, breathable polyester braid. The classic version has a 3¾" brim with stylish turned-up edges. An internal drawstring adjusts fit. Rolls up for packing. 100% poly-braid. Handwash cold. (021)

**Style: SYD**







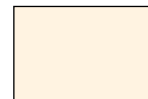
### Casual Traveler

The hat that started it all! This casual, summer style has a 4" adjustable brim that can be worn up or down. An internal drawstring adjusts fit. Crushable. 100% microfiber. Handwash cold. (021)

Style: CAST



white



natural



camel



navy



black



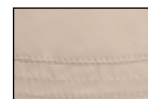
### Piper

Perfect for the beach, this floppy cotton hat is cute and comfortable. 3¾" brim shades you on your search for sand dollars. Inner drawstring adjusts fit. Packable. 100% cotton. Handwash cold. (022-)

Style: PIP



white



beige



black



### Seaside

Lightweight quick-drying microfiber is meant for adventure. Wide 4" brim blocks the sun, while layered mesh lets air through the crown for cool comfort. Inner drawstring adjusts fit. Chinstrap. Crushable. 100% microfiber. Handwash cold. (025)

Style: SEAS

Available January 2019.



natural



camel



new!

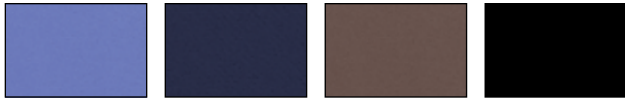




**Aqua Visor**

Quick-drying and lightweight fabric lets you enjoy any water activity without leaving your hat behind. 4" brim. Tie in back adjusts to any size. Packs flat. 100% Lycra®. Handwash cold. (015)

**Style: AQU**



*Our aqua hats & visors are water-friendly  
— perfect for the pool or the beach.*

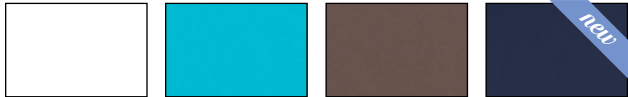


**Aqua Hat**

Hit the beach or the waves with the security of water-safe, wrap-around sun protection. Matching chin strap. 3½" brim. Stretches to fit. Packs flat. 100% Lycra®. Handwash cold. (021)

**Style: AQUH**

New color available January 2019.



white

turquoise

mocha

black

navy



*new  
color!*



**Taylor**

A golf hat with a twist. Criss-crossed fabric adds interest without distraction. 2¾" brim provides ample shade. Matching cotton chin strap is removable, and an internal drawstring adjusts fit. Packable. 100% cotton. Handwash cold. (022-)

**Style: TAY**



white

tan

navy

black







## Petite Collection

Our regular women's hats have a 58cm crown, which can be a little roomy for some. These styles have been scaled down with a smaller crown and brim for petite sizes.

new color!

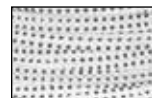


### Petite Scrunchie

3½" brim, 55cm crown. An internal drawstring adjusts fit. Crushable. 100% polyester. Handwash cold. (018)

**Style: PSCR**

New color available January 2019.



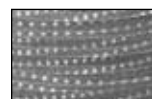
white/  
black dots



fuchsia/  
white dots



turquoise/  
white dots



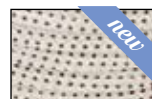
grey/  
white dots



navy/  
white dots



black/  
white dots



natural/  
brown dots



### Petite Victoria

3" brim, 55cm crown. An internal drawstring adjusts fit. Packable. 100% poly-straw. Handwash cold. (017-)

**Style: PVIC**



white



natural



tan



mixed camel



hydrangea



coral



french navy



black

## Extras

Branded merchandise brings the Wallaroo name to a huge audience of outdoor sun-lovers. Promote our new Solabrella and get the word out.

### Solabrella

A lightweight, portable sunshade that provides five times more shade than a standard beach umbrella. Four panels of durable UPF 50+-rated polyester fabric roll up or down - and velcro together - for optimal "wall" placement. Sand anchors and tent pegs keep everything in place. Convenient carry bag. 70"W x 81"H. (055)

**Style: SOLA**



Presentation is everything. An effective store display drives up sales by drawing shoppers' attention, and a fully stocked Wallaroo hat stand perfectly shows off our wide selection of styles and colors.

Our full-size stand is ideal for the front of the store, while the smaller counter stand encourages last-minute purchases and is perfect for our visors or children's hats.



### Floor Stand

20 pegs can hold 20-40 hats. Wood laminate. 18"L x 18"W x 80"H. (110)

**Style: FSTAND**

### Counter Stand

Displays up to 15 visors or children's hats. Wood laminate. 18"L x 9"W x 21"H. (075)

**Style: CSTAND**





Men's Collection

Elevate your wardrobe beyond baseball caps with these classic shapes. Our men's hats have wide brims for excellent sun protection and styles to fit every occasion.

GREAT  
FOR MEN &  
WOMEN!



Palm Beach

This just may be the perfect hat! Made from a super soft braided fabric and an adjustable elastic fit system, this hat is designed for comfort. Simple, clean lines make for easy wardrobe coordination. 2¾" brim. Inner drawstring adjusts fit. Sizes: M/L (59cm) and L/XL (61cm). Packable. 100% polyester. Spot clean. (026)

Style: PLMBCH  
Available January 2019.



new!

Cabo

We've reinvented the classic surf-style hat. Great for travel, it folds for easy packing and features maximum sun protection. Embroidered trim on brim and crown. 3¼" brim. Inner drawstring adjusts fit. Sizes: M/L (59cm) and L/XL (61cm). Packable. 100% paper braid. Spot clean. (026)

Style: CABO  
Available January 2019.



new!





### Justin

Everyday style for men with impeccable taste. 2" brim with black ribbon trim. Internal drawstring adjusts fit. Sizes: M/L (59cm) and L/XL (61cm). Packable. 100% paper braid exclusive of trim. Spot clean. (022-)

**Style: JUS**



natural



### St. Tropez Fedora

This appealing color-blocked hat is the complement to our women's version. 2 1/4" structured brim. Inner drawstring adjusts fit. Sizes: M/L (59cm) and L/XL (61cm). Packable. 100% paper braid. Spot clean. (025)

**Style: STTFED**



natural combo

UPF  
50+



### Charleston

Perfect for a weekend getaway, this twisted seagrass hat is island inspired. Removable chin strap with adjustable toggle. Detailed with metal eyelets and a suede band. 3" brim. Inner drawstring adjusts fit. Sizes: M/L (59cm) and L/XL (61cm). Packing not recommended. 100% seagrass with a cotton lining. Spot clean. (025)

**Style: CHAR**



natural

UPF  
50+







### Avery

Lightweight sophistication for hot summer days. Metal eyelets increase air flow to cool your head. 2½" brim. Inner drawstring adjusts fit. Sizes: M/L (59cm) and L/XL (61cm). Packing not recommended. 100% Japanese glazed paper exclusive of trim. Spot clean. (027)

**Style: AVE**



natural



### Blake

Zig zag stitching adds a modern touch to a classic look. The sturdy 3¼" brim offers ample shade for every summer adventure. Black ribbon detail. Internal drawstring adjusts fit. Sizes: M/L (59cm) and L/XL (61cm). Packable. 100% paper braid exclusive of trim. (025)

**Style: BLAK**



natural



ivory



### Palmer

This lightweight fedora is great for travel - just fold it in your suitcase and go. It bounces right back! 3½" brim with a black ribbon trim. An internal drawstring adjusts fit. Sizes: M/L (59cm) and L/XL (61cm). Packable. 100% paper braid exclusive of trim. Spot clean. (025)

**Style: PAL**



natural







### Shelton

By popular demand, we've added an outdoor hat with an 8½"-long flap for complete neck protection. Perfect for all-day events like fishing, hiking, or watching a baseball game. A Velcro pocket inside the 2½" brim stows the flap when not needed. Adjustable chin strap. An internal drawstring adjusts fit. Sizes: M/L (59cm) and L/XL (61cm). Packable. 100% cotton. Handwash cold. (025)

**Style: SHE**



camel/navy



### Gabe

Distinctive suede trim around the brim and crown separates this hat from the crowd. 3" brim. Inner drawstring adjusts fit. Sizes: M/L (59cm) and L/XL (61cm). Packable. 100% poly-straw exclusive of trim. Spot clean. (025)

**Style: GAB**



suede







### Outback

A modern fedora to dress him up in class. 3" brim, brown suede band. An internal drawstring adjusts fit. Sizes: M/L (59cm) and L/XL (61cm). Packable. 100% paper braid exclusive of trim. Spot clean. (025)

Style: OUT



brown



natural



### Jackson

With a breathable mesh crown, this packable hat will keep you cool all summer. 3" brim. An internal drawstring adjusts fit. Sizes: M/L (59cm) and L/XL (61cm). Packs flat. 100% microfiber and ventilated mesh. Handwash cold. (021)

Style: JAC



camel



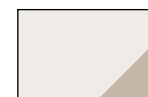
### Explorer

There's no adventure this hat can't handle. Wide, microfiber 3" foam brim allows the hat to float in the water. Water repellant, lightweight, crushable, and packable. Chin strap. An internal drawstring adjusts fit. Sizes: M/L (59cm) and L/XL (61cm). Packs flat. 100% microfiber. Handwash cold. (021)

Style: MEXP



camel/navy



natural/camel

### Jr. Explorer

Kid's version has a 2½"-3½" front and back. 56cm fits ages 5-12. Packs flat. 100% microfiber. Handwash cold. (013-)

Style: JREXP



camel/navy





# Children's Collection

Children need to learn about sun protection early so they can develop life-long healthy habits. Our complete line of comfortable, colorful hats covers newborns to teens.



## Lorikeet

Protect delicate infant skin from the sun's harsh rays. Velcro chin strap, terry lined. 46cm hat fits 3 to 12 months, 2" brim. Crushable. 100% cotton. Handwash cold. (010-)

Style: LOR



white/blue    blue daisies    fuchsia daisy    blue fish



## Aloha Hat

An adorable bucket hat in a cheeky island-inspired pattern. Say "goodbye" to sunburns! 2" brim. 46cm fits ages 3-12 months. Crushable. 100% cotton. Handwash cold. (012-)

Style: ALO



denim blue    blue floral







**Microfiber Platypus**

We've added this water-resistant, quick-dry version of the Platypus for beach and pool play dates. 2¼"-3¼" brim, matching velcro chin strap. 49cm fits ages 1-2½ years. Crushable. 100% microfiber. Handwash cold. (012-)

Style: MPLA



aqua



pink



**Platypus**

Extra-wide brim provides added protection for active toddlers. 2¼"-3¼" brim, velcro chin strap. 49cm fits ages 1-2½ years. Crushable. 100% cotton. Handwash cold. (012-)

Style: PLA



fuchsia dots



seersucker



pink roses



**Maui**

Warning: Cuteness overload! Charming floppy hat in a retro-Hawaiian print fabric. Velcro chin strap keeps it secure. 2" brim. 49cm fits ages 1-2½ years. Crushable. 100% cotton. Handwash cold. (012-)

Style: MAU



seafoam  
palm tree



pink  
palm tree







### Croc & Shark

Clever cut-outs up the cute factor on these adorable embroidered hats. 3¼" brim provides plenty of shade for outdoor summer fun. Cotton chin strap. An internal drawstring adjusts fit. Crushable. 100% cotton exclusive of trim. Handwash cold.

#### 52cm

Toddlers love that something has taken a "bite" out of their hat! 52cm fits ages 2-5 years. (014-)

Pink Crocodile **Style: CRO**  
Shark **Style: SHA**



pink crocodile



blue shark

#### 55cm

Our toddler version is so popular, we've been asked to make it for older kids, too! 55cm fits ages 5-10 years. (014-)

Pink Crocodile **Style: CRO55**  
Shark **Style: SHA55**



pink crocodile



blue shark



### Petite Nantucket

An explosion of color! 2½" brim. An internal drawstring adjusts fit. Crushable. 100% poly-ribbon. Handwash cold.

#### 52cm

A more petite Petite Nantucket for little girls who want to be like big sis. 52cm fits ages 2-5 years (013-)

**Style: PNAN52**



rainbow tones



jewel tones

#### 54cm

Brightly colored ribbons are sewn together to create brilliant patterns. 54cm fits ages 4-8 years. (013-)

**Style: PNAN**



rainbow tones



fuchsia tones



aqua tones



hot pink tones



lilac tones







### Sawyer

A charming bucket hat with the classic look of stripes. 54cm fits ages 4-8 years. 2" brim. An internal drawstring adjusts fit. Crushable. 100% cotton. Handwash cold. (014-)

**Style: SAWY**

Available January 2019.



blue stripes



pink stripes

new!



### Riley

Flowers and palm trees represent fun in the sun and that's just what you'll get! 55cm fits ages 5-12 years. 2½" brim. Inner drawstring adjusts fit. Crushable. 100% cotton exclusive of trim. Handwash cold. (014-)

**Style: RIL**



denim blue



blue floral







*new  
color!*



Modeled after our popular women's hat, this scaled-down version sports a 3½" brim. 55cm fits ages 5-12 years. An internal drawstring adjusts fit. Crushable. 100% polyester. Handwash cold. (018)

**Style: PSCR**



grey/white



navy/white



**Bonnie Bowles**

Laura Bedell

Jill Grover-Golf

Harmony Hayner

LeeAnn Stevens

Kelly &amp; Elly Jelacic

**Lisa Henderson–Golf**

Patty Chovan

Lisa Dickerson & Kelly Jelacic

**Tim Gaskin & Associates**

Kathy Shannon

### Kip Hills—Golf & Tennis

Amy Stickler


Robin &amp; Sandy Roberts

Gigi Duncan

## Donald W. Maier

Donald W. Maier

**Jane Forcellati**

Aloha Hat .....	55	Gabe .....	51	Naples .....	35			
Amelia .....	12	Hailey .....	19	Outback .....	52			
Aqua Hat .....	41	Hannah .....	16	Palm Beach .....	44			
Aqua Visor .....	40	Harper .....	33	Palmer .....	49		St. Tropez Fedora .....	47
Aria .....	10	Jackson .....	52	Petite Nantucket .....	59		St. Tropez Trilby .....	13
Avery .....	48	Josie .....	23	Petitie Scrunchie .....	42, 62		Sydney .....	37
Bianca .....	9	Jr. Explorer .....	53	Petite Victoria .....	42		Tahiti .....	20
Blake .....	49	Julia .....	23	Piper .....	38		Tahiti Cowboy .....	20
Breton .....	36	Justin .....	46	Platypus, Cotton .....	56		Taylor .....	41
Cabo .....	45	Kristy .....	30	Platypus, Microfiber .....	56		Tina .....	15
Camille .....	4	Laguna .....	7	Riley .....	61		Tori .....	24
Casual Traveler .....	38	Lorikeet .....	54	Riviera .....	11		Trilogy Trilby .....	35
Catalina .....	14	Malibu .....	17	Savannah .....	9		Victoria .....	28
Catalina Cowboy .....	14	Maui .....	57	Savannah Visor .....	8		Victoria Diva .....	27
Celeste .....	18	Mia .....	31	Sawyer .....	60		Victoria Fedora .....	29
Charleston .....	47	Monroe .....	25	Scrunchie .....	32		Victoria Sport .....	30
Counter Stand .....	43	Montecito .....	5	Seaside .....	39	Victoria Two-Toned .....	26	
Croc & Shark .....	58	Monterey .....	6	Sedona .....	34			
Emma .....	22	Morgan .....	21	Shelton .....	50			
Explorer .....	53	Naomi .....	33	Solabrella .....	43			
Floor Stand .....	43	Napa .....	18	St. Tropez .....	13			







PRSR STD  
U.S. POSTAGE  
BOULDER CO  
PERMIT NO. 34

## WALLAROO HAT COMPANY

3155 Sterling Circle  
Boulder, Colorado 80301  
TEL: 303-494-5949  
TOLL FREE: 1-888-925-2766  
FAX: 303-245-8720  
[www.wallarooohats.com](http://www.wallarooohats.com)



©2018-2019 by Wallaroo Hat Company, LLC. All rights reserved.



The Palm Beach, see page 44.